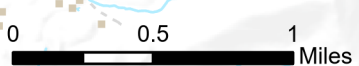
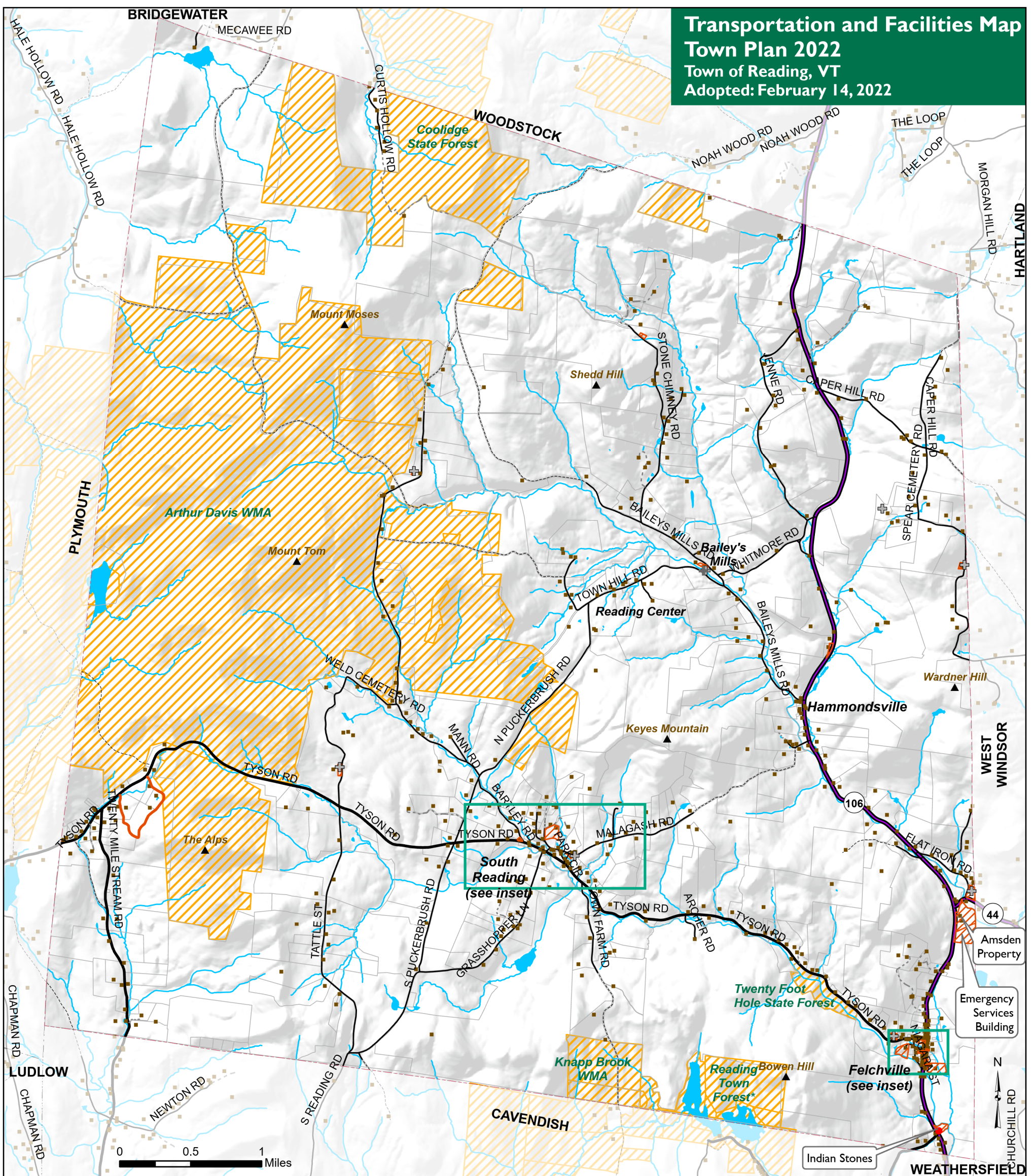


Transportation and Facilities Map

Town Plan 2022

Town of Reading, VT

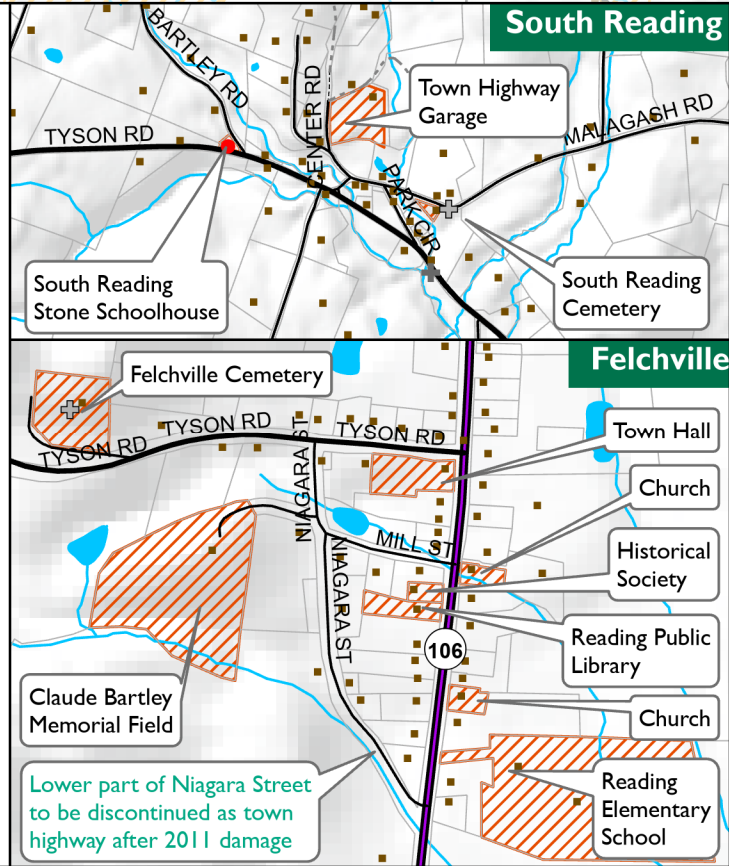
Adopted: February 14, 2022



- ⊕ Cemetery
- Other sites of interest
- Building
- ▲ Summit
- ▨ State Owned Land
- ▨ Tax Exempt Land
- Layer
- VT State Highway
- Class 2 Town Highway
- Class 3 Town Highway
- Class 4 Town Highway
- Legal Trail
- Private Road
- Layer
- River or Stream
- Lake or Pond

* Town does not own Reading Town Forest but only has the timber rights to it

There are no transmission lines or telecommunications towers within town.



VT State Plane, Meters, NAD 83
Data depicted on this map are for planning purposes only and are based on best available information. Some of the data do not line up.

Data Sources:
Buildings (E911 2019), Town and state owned land (Terra Map 2011), Road centerline (VTrans 2019), Summits (unknown), Waterbodies (VHD 2010), Conserved Lands (VT Protected Lands Database, 2019), Town Boundary (VCGI 2016), Hillshade (Derived from 10m DEM USGS/VCGI 2012), Parcels (VCGI 2019)



P.O. Box 320, Ascutney, VT 05030
802-674-9201 www.marvcvt.org

For planning purposes only
Not for regulatory interpretation
Map last revised: February 14, 2022