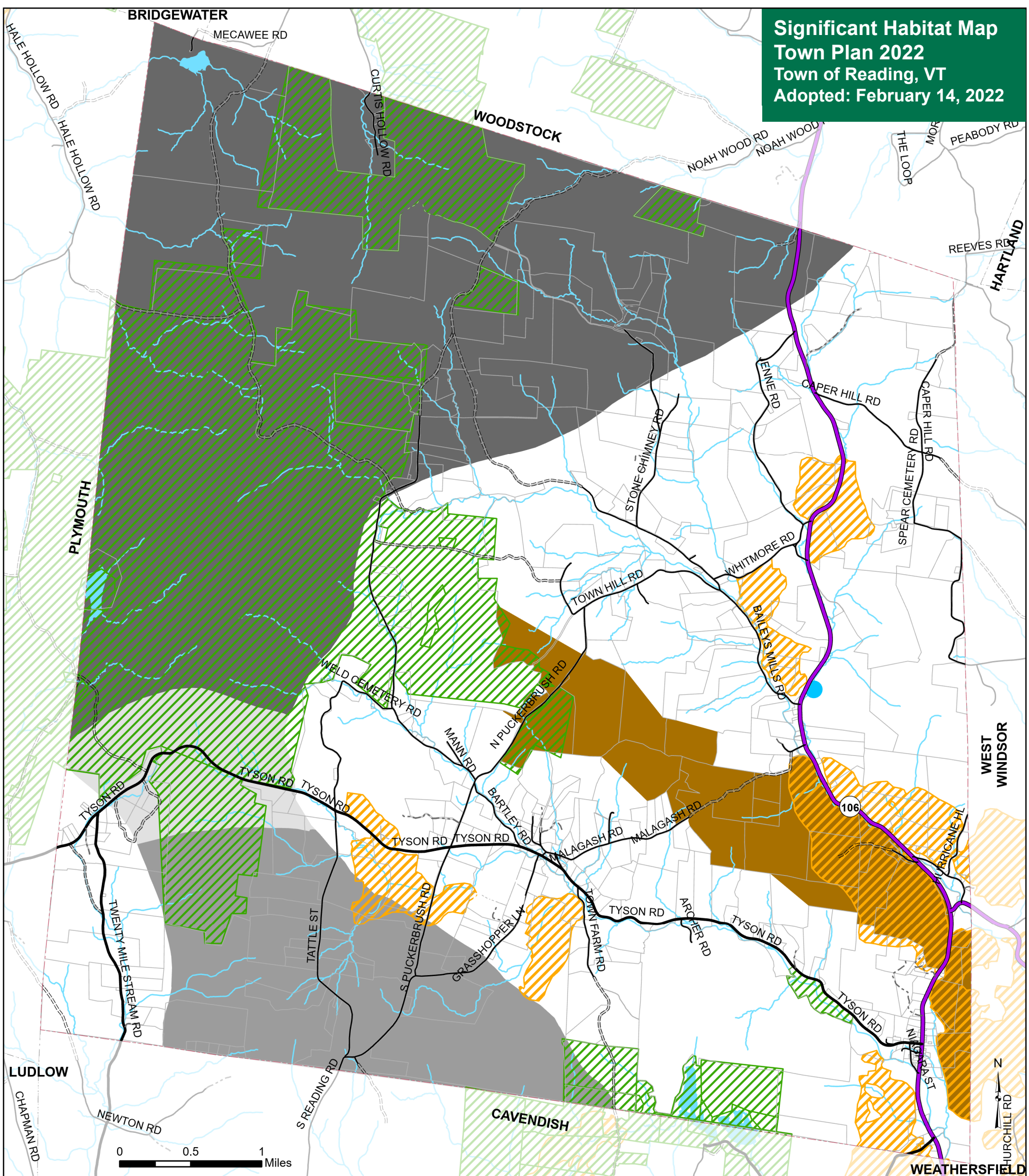
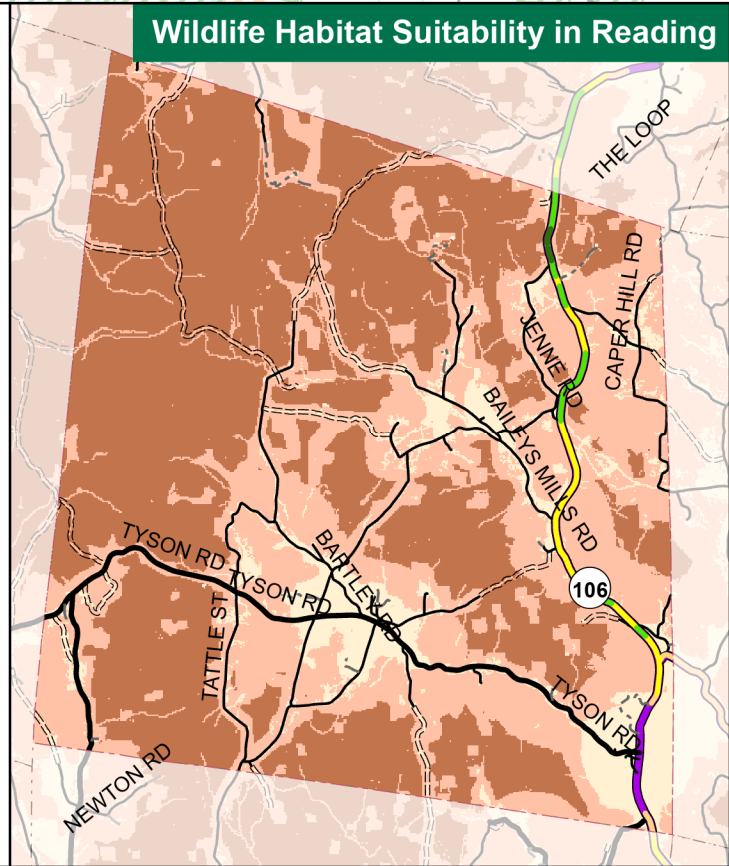


**Significant Habitat Map  
Town Plan 2022  
Town of Reading, VT  
Adopted: February 14, 2022**




Deer Wintering Area	<b>Wildlife Habitat Suitability</b>
Black Bear Habitat	6 and under
Production Habitat	6-8
Seasonal Habitat	8-10
Corridor	<b>Wildlife Crossing Value</b>
Conserved Public Land	(out of 10)
Significant Wildlife Habitat Overlay District	5 - 5.5
State Endangered Species	6 - 6.5
VT State Highway	7 - 7.5
Class 2 Town Highway	8 - 8.5
Class 3 Town Highway	Lake or Pond
Class 4 Town Highway	River or Stream
Legal Trail	Parcels (Reading only)
Private Road	Town Boundary

There are no known rare, threatened or endangered species within town.  
Wildlife Overlay District is a draft.



VT State Plane, Meters, NAD 83  
Data depicted on this map are for planning purposes only and are based on best available information. Some of the data do not line up.

Data Sources:  
Road centerline (VTrans 2019),  
Waterbodies (VHD 2019), Town boundary (VCGI 2016),  
Deer Wintering Areas (ANR 2016),  
Black Bear Habitat (ANR 1989),  
Wildlife Crossing Value (VT Dept of Fish and Wildlife (VDFW) 2006),  
Wildlife Habitat Suitability (VDFW 2006),  
Threatened and Endangered Species (ANR 2010),  
Conserved Lands (VT Protected Lands Database, 2019),  
Parcels (VCGI 2019)



**Mount Ascutney  
Regional Commission**  
P.O. Box 320, Ascutney, VT 05030  
802-674-9201 www.marcvt.org

For planning purposes only  
Not for regulatory interpretation  
Map last revised: February 14, 2022