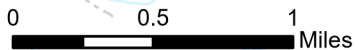
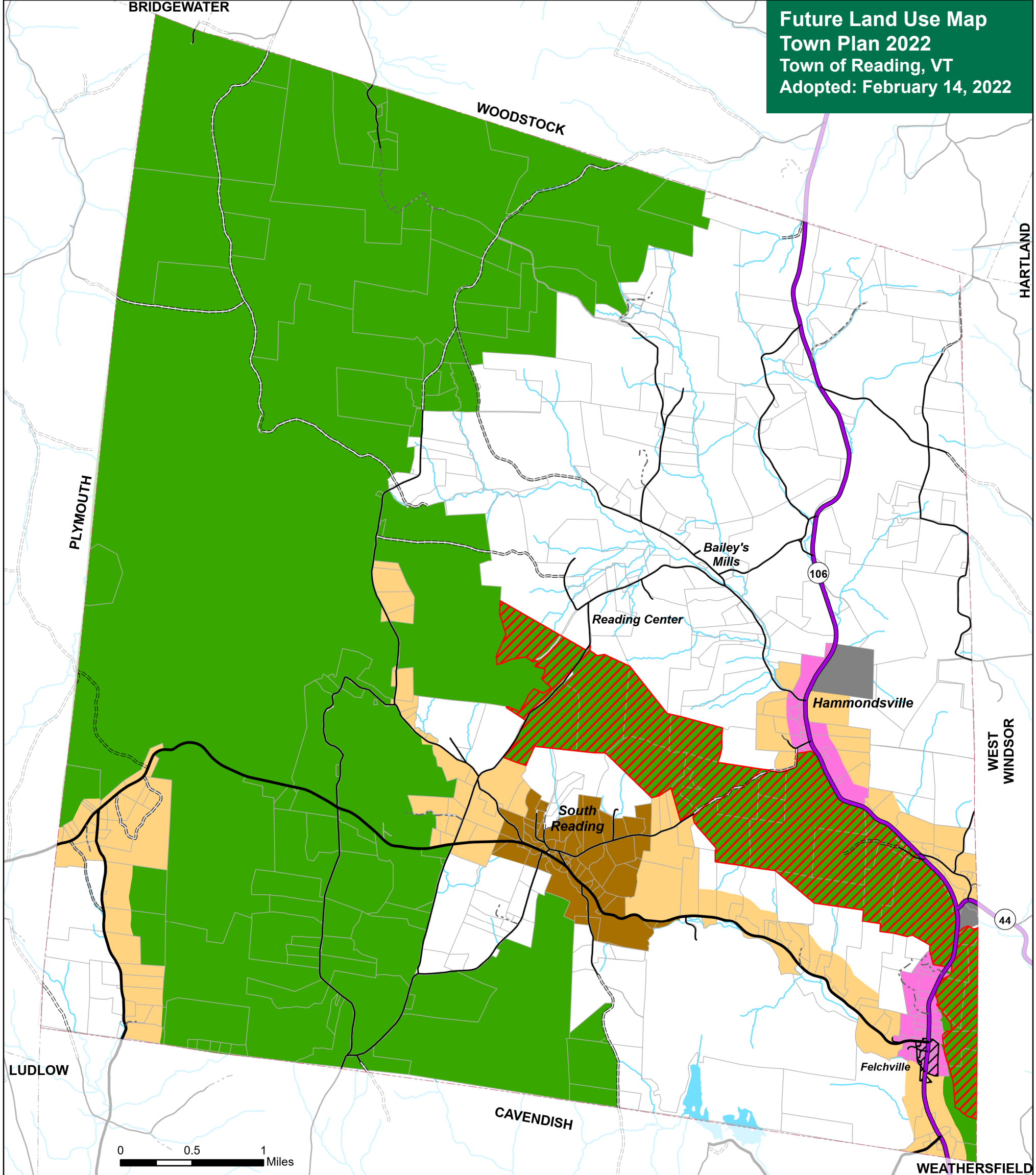


**Future Land Use Map
Town Plan 2022
Town of Reading, VT
Adopted: February 14, 2022**



Future Land Use Categories

- Conservation
- Mixed Use
- High Density Residential
- Rural Residential
- Industrial/ Mining
- Forest
- Significant Wildlife Habitat Overlay District
- Felchville Village Center
- VT State Highway
- Class 2 Town Highway
- Class 3 Town Highway
- Class 4 Town Highway
- Legal Trail
- Private Road
- Lake or Pond
- River or Stream
- Parcels (Reading Only)
- Town Boundary

*VT State Plane, Meters, NAD 83
Data depicted on this map are for planning purposes only and are based on best available information. Some of the data do not line up.*

Data Sources:
Future Land Use Categories (RPC 2020), Wildlife Overlay District (Adopted July 8, 2019), Road Centerline (VTrans 2019), Waterbodies (VHD 2019), Parcels (VCGI 2019), Town Boundaries (VCGI 2016)



P.O. Box 320, Ascutney, VT 05030
802-674-9201 www.marcvt.org

For planning purposes only
Not for regulatory interpretation
Map last revised: February 14, 2022

Future land use categories follow definitions in Chapter 7 of the Town Plan.

Conservation Future Land Use Category includes all lands currently conserved (public and private) as well as additional areas delineated in 2005/2010 Future Land Use Map.