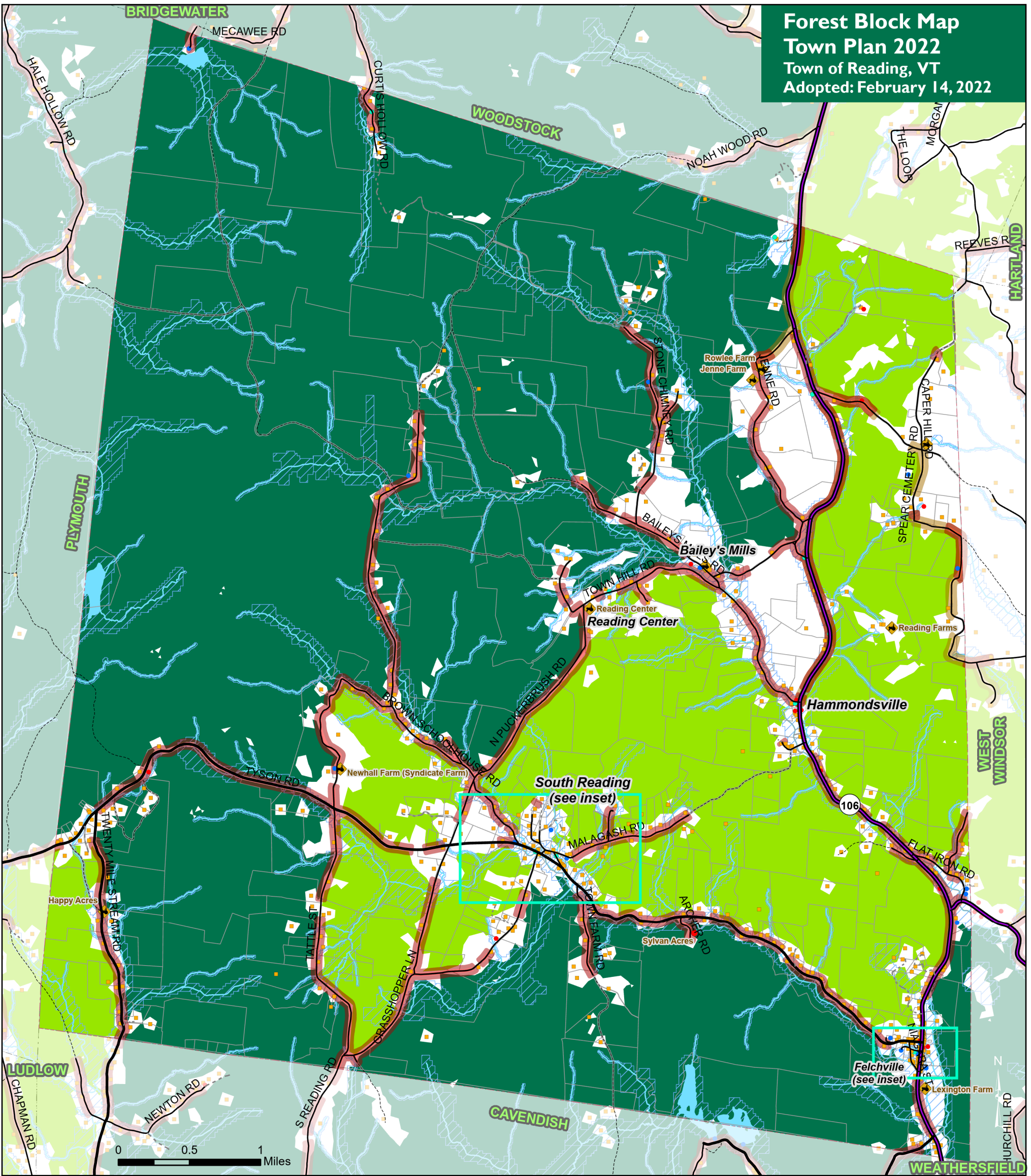


Forest Block Map
Town Plan 2022
 Town of Reading, VT
 Adopted: February 14, 2022

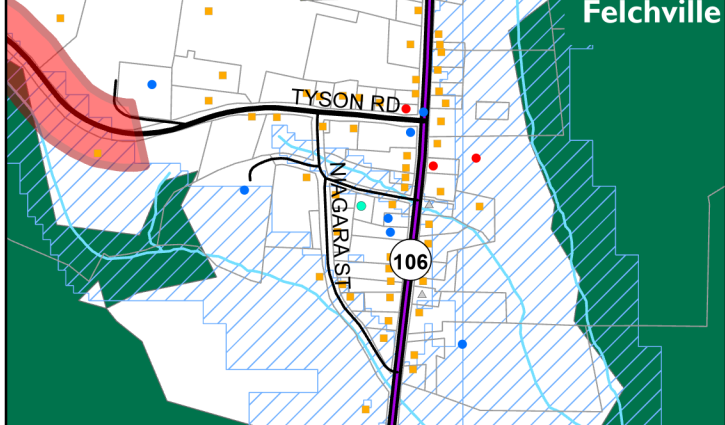
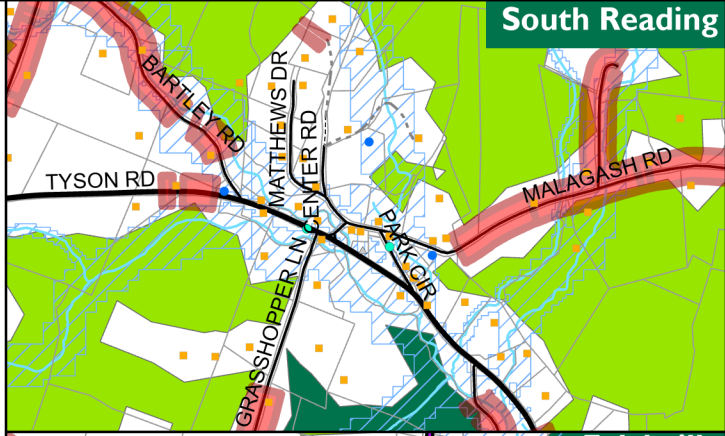


Land Use

- Residential
- Commercial
- Industrial
- Civic building
- ▲ Church
- Public gathering place
- ⊕ Cemetery
- ◆ Farm
- Layer
- Parcels (Reading only)
- VT State Highway
- Class 2 Town Highway

- Class 3 Town Highway
- Class 4 Town Highway
- Legal Trail
- Private Road
- Layer
- ~ River or Stream
- Lake or Pond
- Act 174 Designations**
- Highest Priority Crossings
- Priority Crossings
- Riparian Areas
- Highest Priority
- Priority

For conserved lands, see separate map.



VT State Plane, Meters, NAD 83
 Data depicted on this map are for planning purposes only and are based on best available information. Some of the data do not line up.

Data Sources:
 Buildings (VCGI/ E911 2019 with Town Plan 2014 input),
 Farms (Town 2013 and RPC 2013)
 Road centerline (VTrans 2021),
 Waterbodies (VHD 2010),
 Parcels (VCGI 2019),
 Act 174 Designations (ANR 2016)



Mount Ascutney Regional Commission
 P.O. Box 320, Ascutney, VT 05030
 802-674-9201 www.marcv.org

For planning purposes only
 Not for regulatory interpretation
 Map last revised: February 14, 2022