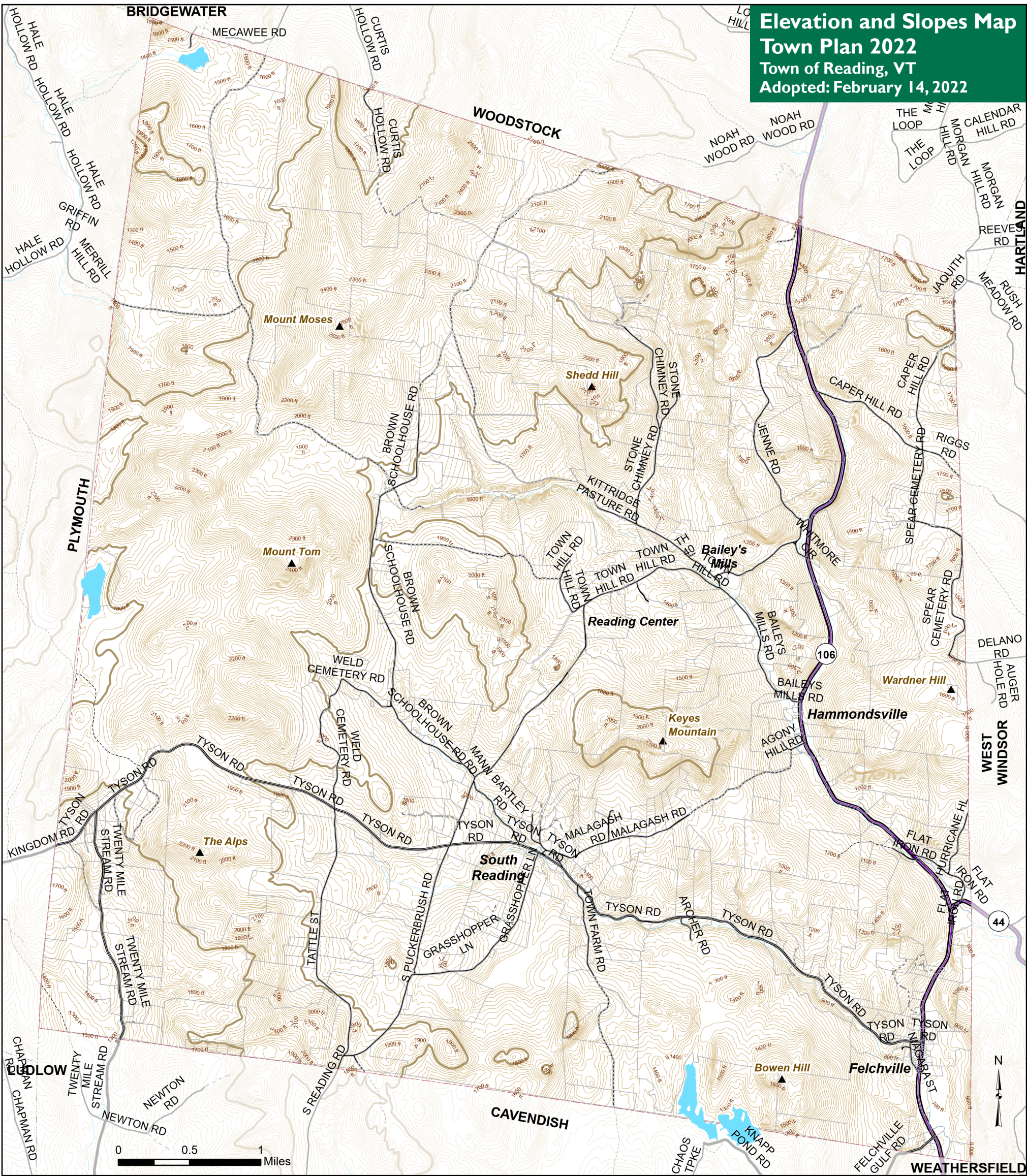
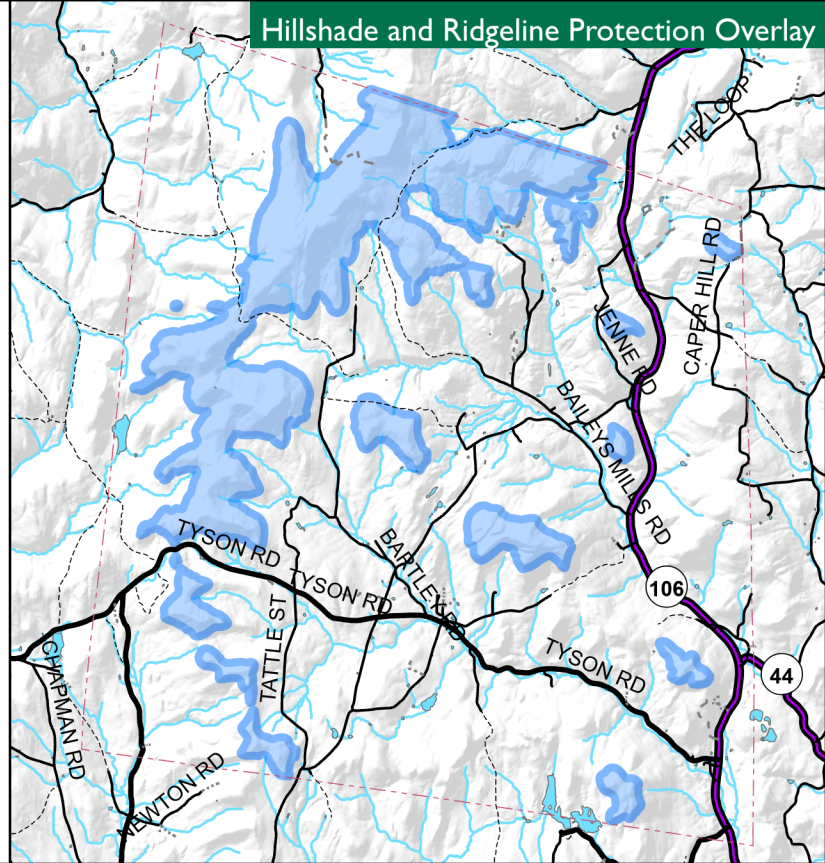


Elevation and Slopes Map
Town Plan 2022
 Town of Reading, VT
 Adopted: February 14, 2022



- ▲ Summit
- 1800ft contour
- 20ft contours
- Ridgeline Overlay (Adopted July 8, 2019)
- Steep slopes
- Layer
- VT State Highway
- Class 2 Town Highway
- Class 3 Town Highway
- Class 4 Town Highway
- Legal Trail
- Private Road
- Layer
- Parcels (Reading only)

Ridgeline Protection Overlay shown is regulated by the Reading Zoning Bylaws.
 Steep slopes shown are 24% and above due to data constraints while town plan refers to 25% and above.



VT State Plane, Meters, NAD 83
 Data depicted on this map are for planning purposes only and are based on best available information. Some of the data do not line up.

Data Sources:
 Road centerline (VTrans 2021), Town boundary (VCGI 2016), Summit (Unknown), Contours, steep slopes and hillshade (derived from 10m DEM, USGS/VCGI 2012), Ridgeline Protection Overlay (Town), Parcels (VCGI 2019), Waterbodies (VHD 2010)



Mount Ascutney Regional Commission
 P.O. Box 320, Ascutney, VT 05030
 802-674-9201 www.marvcvt.org

For planning purposes only
 Not for regulatory interpretation
 Map last revised: February 14, 2022