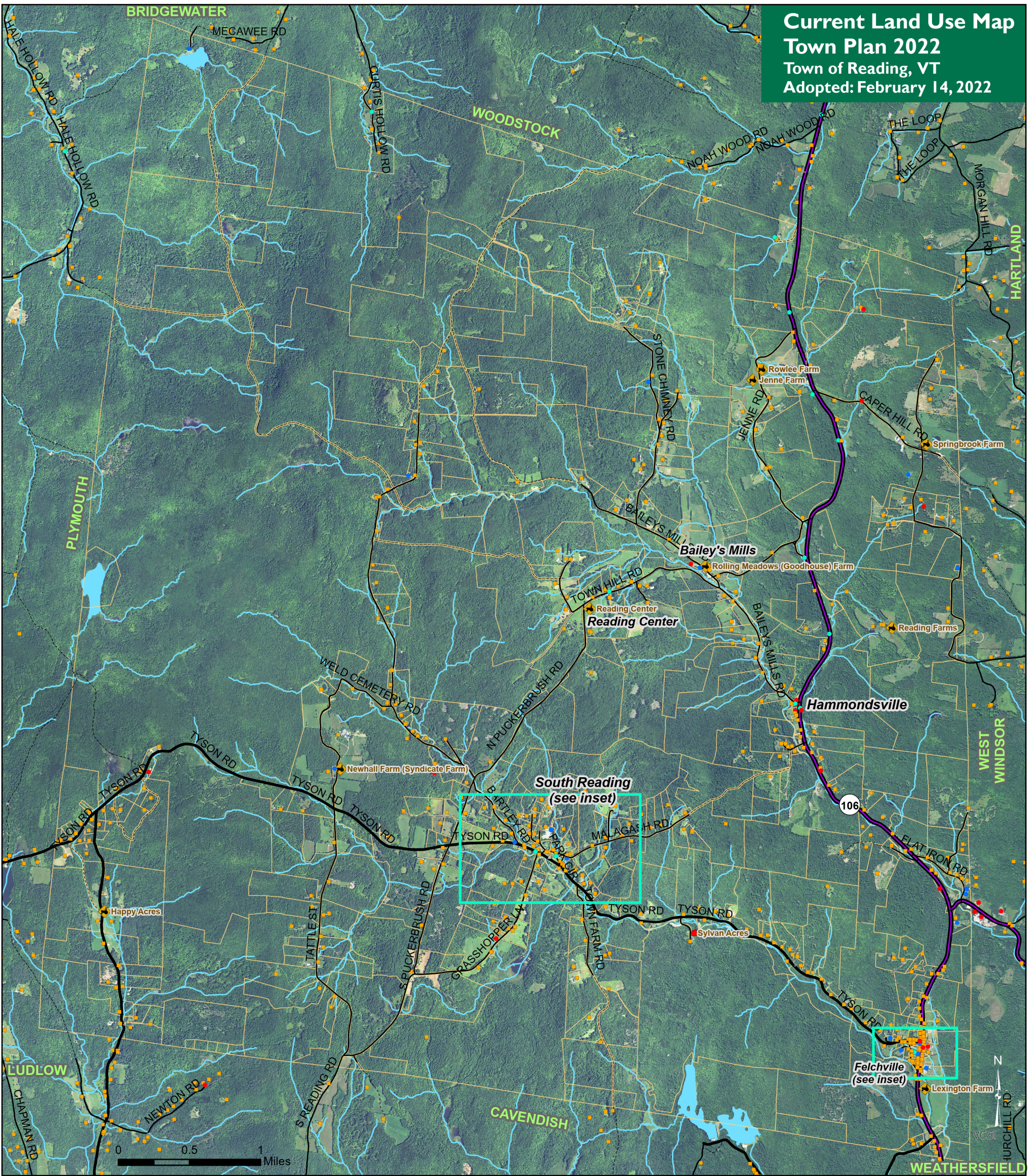
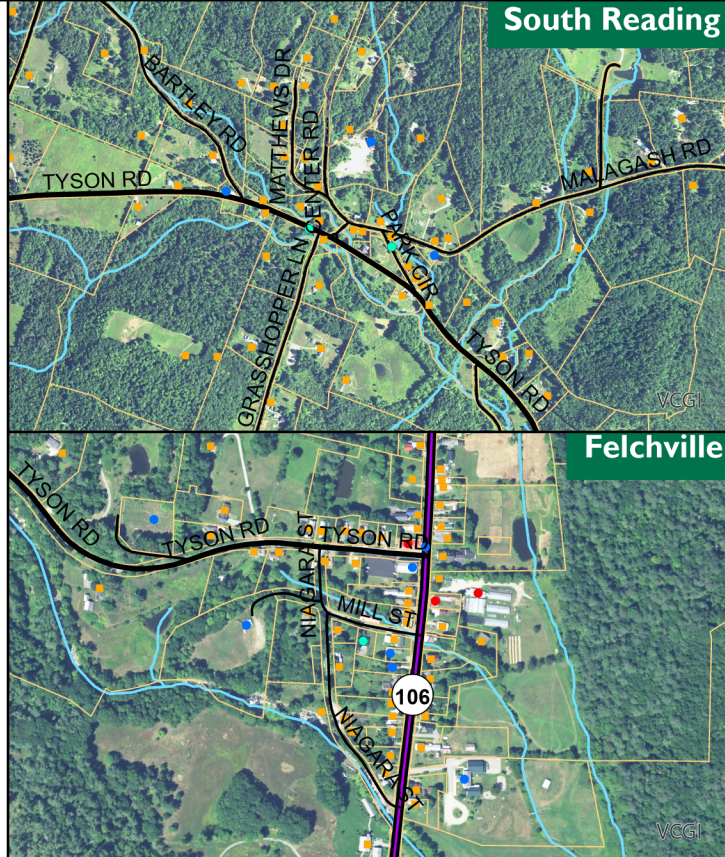


Current Land Use Map
Town Plan 2022
 Town of Reading, VT
 Adopted: February 14, 2022



- | | |
|------------------------|------------------------|
| Land Use | Parcels (Reading only) |
| Residential | VT State Highway |
| Commercial | Class 2 Town Highway |
| Industrial | Class 3 Town Highway |
| Civic building | Class 4 Town Highway |
| Church | Legal Trail |
| Public gathering place | Private Road |
| Cemetery | River or Stream |
| Farm | Lake or Pond |
| Layer | Layer |

For conserved lands, see separate map.



VT State Plane, Meters, NAD 83
 Data depicted on this map are for planning purposes only and are based on best available information. Some of the data do not line up.

Data Sources:
 Buildings (VCGI/ E911 2019 with Town Plan 2014 input),
 Farms (Town 2013 and RPC 2013)
 Road centerline (VTrans 2021),
 Waterbodies (VHD 2010),
 Parcels (VCGI 2019),
 Aerial (NAIP 2016)



P.O. Box 320, Ascutney, VT 05030
 802-674-9201 www.marvcvt.org

For planning purposes only
 Not for regulatory interpretation
 Map last revised: February 14, 2022