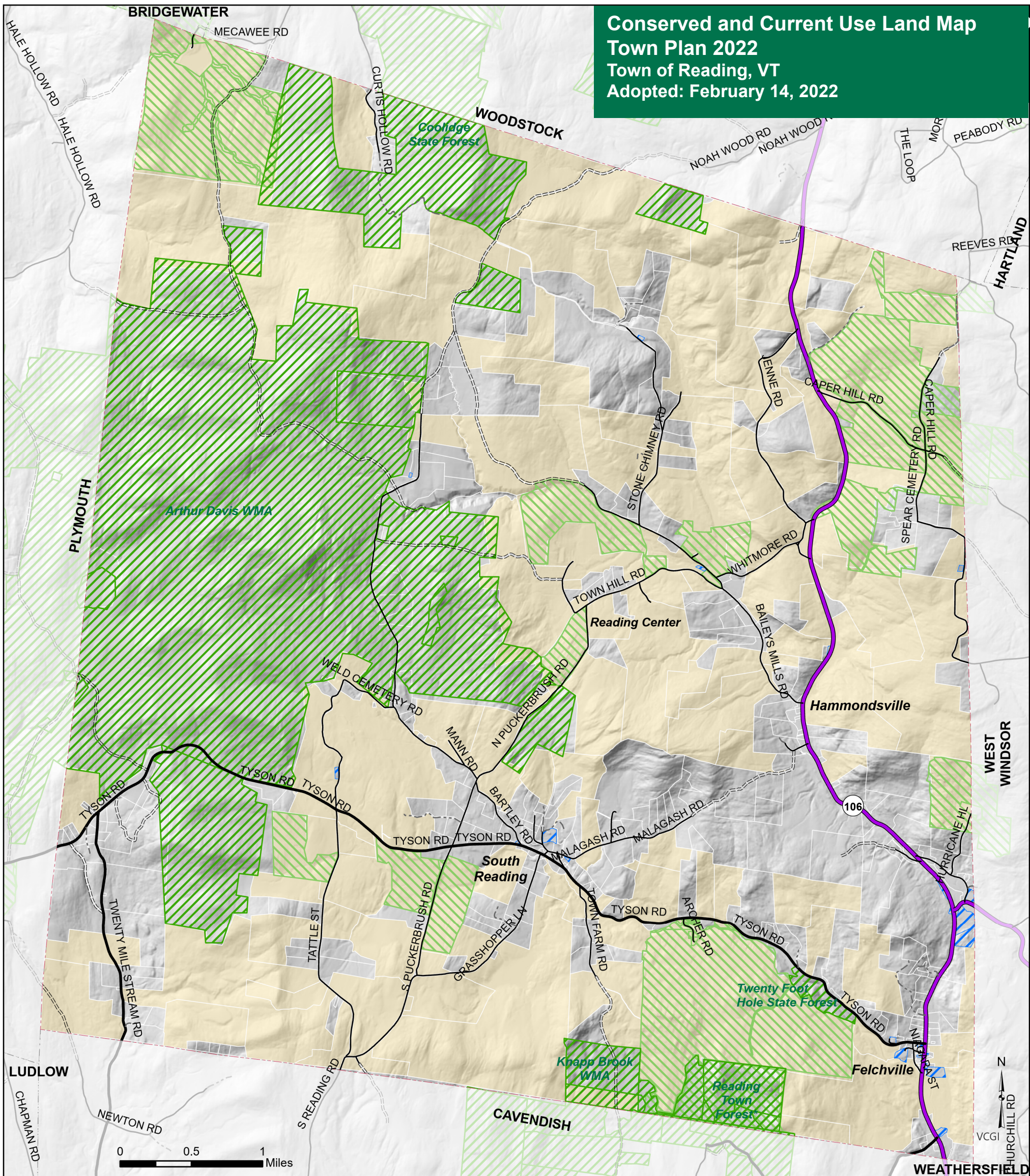
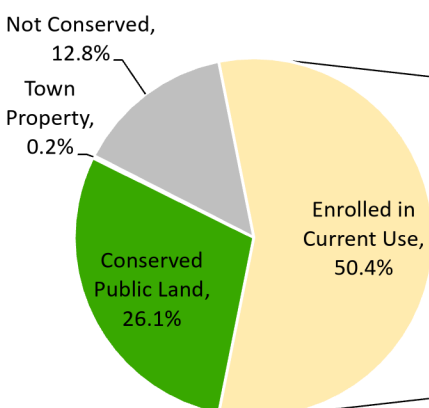


Conserved and Current Use Land Map
Town Plan 2022
 Town of Reading, VT
 Adopted: February 14, 2022



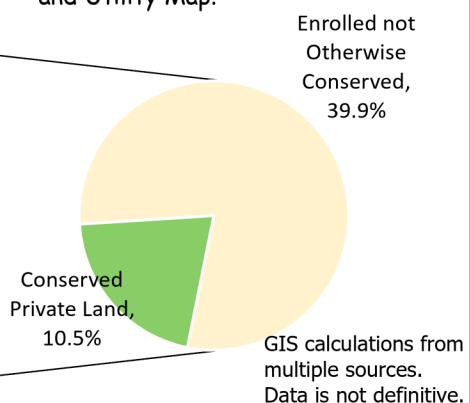
- Conserved Lands**
- Town Property
 - Conserved Public Land
 - Conserved Private Land
 - Land Enrolled in Current Use

* Town does not own Reading Town Forest but only has the timber rights to it

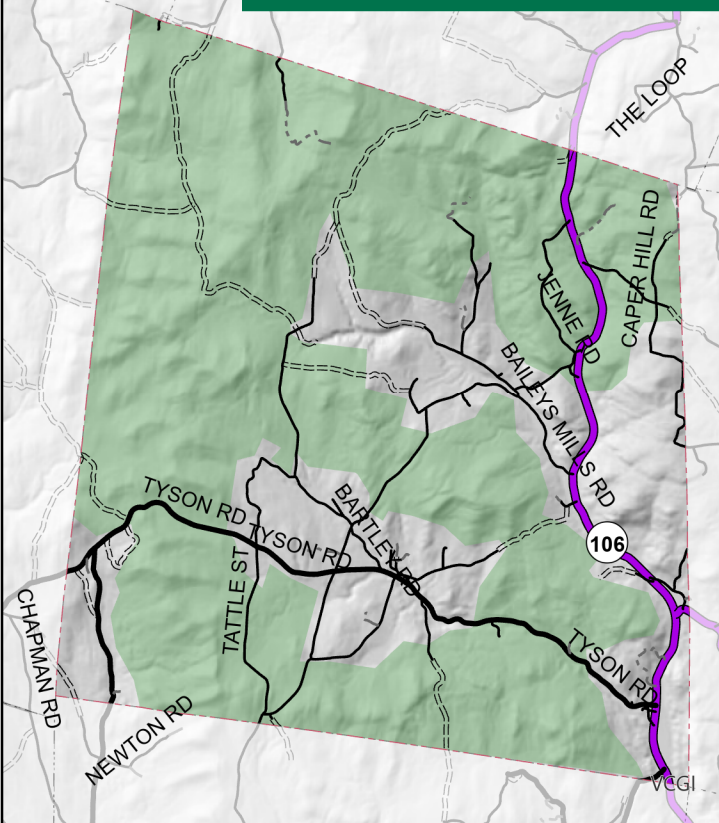


The priority forest lands area was developed during the 2008 Forest Fragmentation Project. These lands encompass a very wide variety of forest resources that were identified as important by community members, including wildlife habitat, recreation, forest management, landscape preservation and ecological services (e.g. water and air quality).

For more information about other public lands, see Transportation and Utility Map.



Priority Forest Land in Reading



VT State Plane, Meters, NAD 83
 Data depicted on this map are for planning purposes only and are based on best available information. Some of the data do not line up.

Data Sources: Road centerline (VTrans 2019), Town Owned Property (Town 2012), Conserved Lands (VT Protected Lands Database, 2019) Town Boundary (VCGI 2016), Parcels (VCGI 2019), Forest Lands (2008 Reading Forest Fragmentation Report), Hillshade (VCGI 2016)



P.O. Box 320, Ascutney, VT 05030
 802-674-9201 www.marcv.org

For planning purposes only
 Not for regulatory interpretation
 Map last revised: February 14, 2022