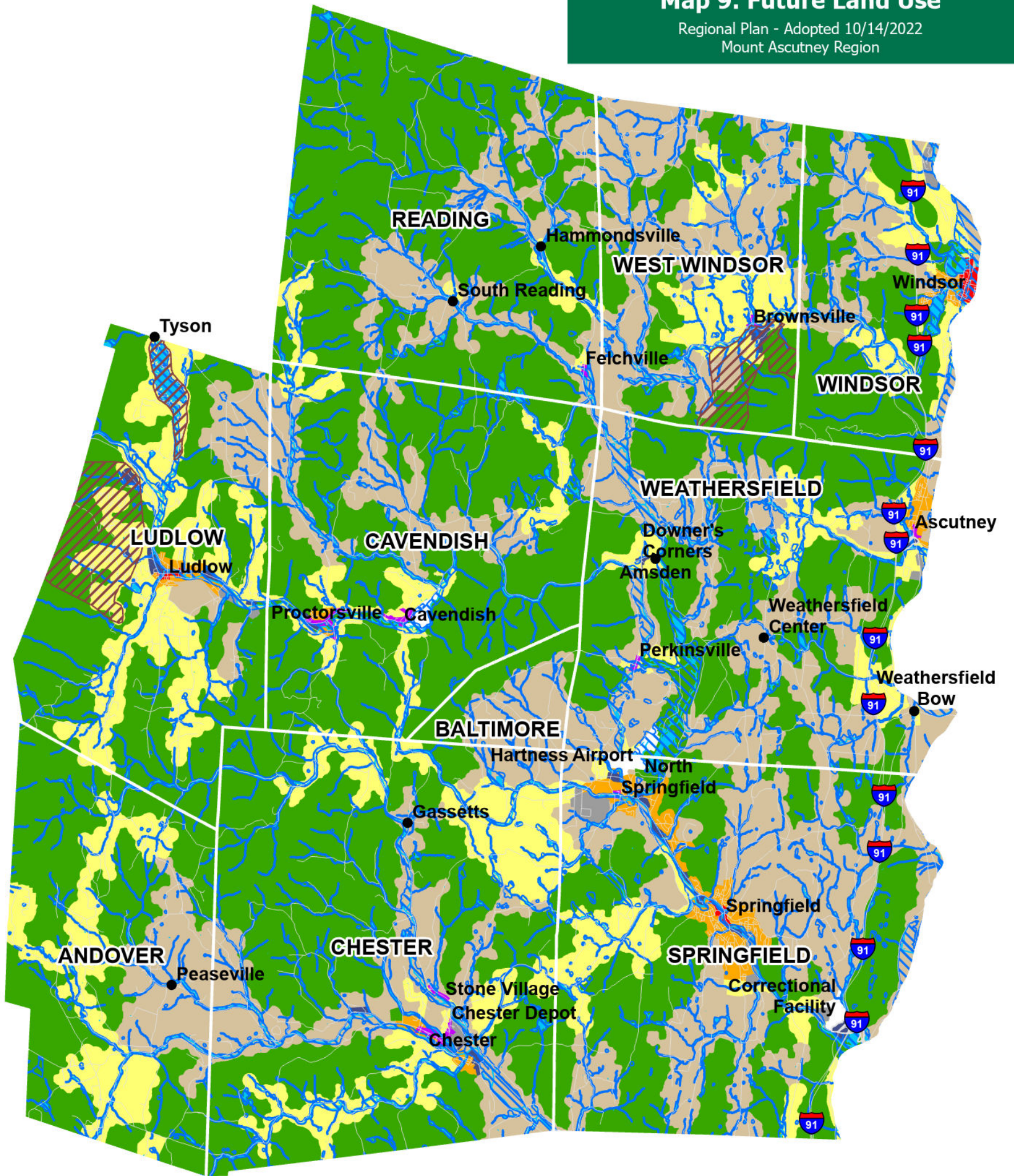


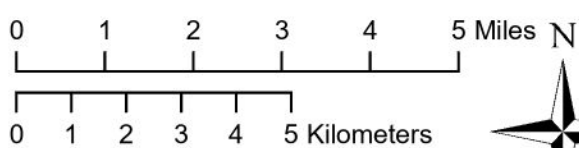
Map 9. Future Land Use

Regional Plan - Adopted 10/14/2022
Mount Ascutney Region



- Hamlet
- ▨ Interchange Overlay
- ▨ Resort/ Recreation Overlay
- ▨ Riparian Overlay
- Commercial Nodes/ Corridors
- Conservation
- Village Centers
- Industrial
- Neighborhood Residential
- Rural Residential
- Special Use Areas
- Town and Regional Centers
- Working Lands

Data Sources:
Boundaries (VCGI, 2016; NH Granit, 2014)



1 inch equals 2 miles



PO Box 320, Ascutney, VT 05030
www.marcvt.org

VT State Plane, Meters, NAD 83

Map drawn: September 25, 2021
Plan Adopted: October 14, 2022
Plan Effective: November 18, 2022