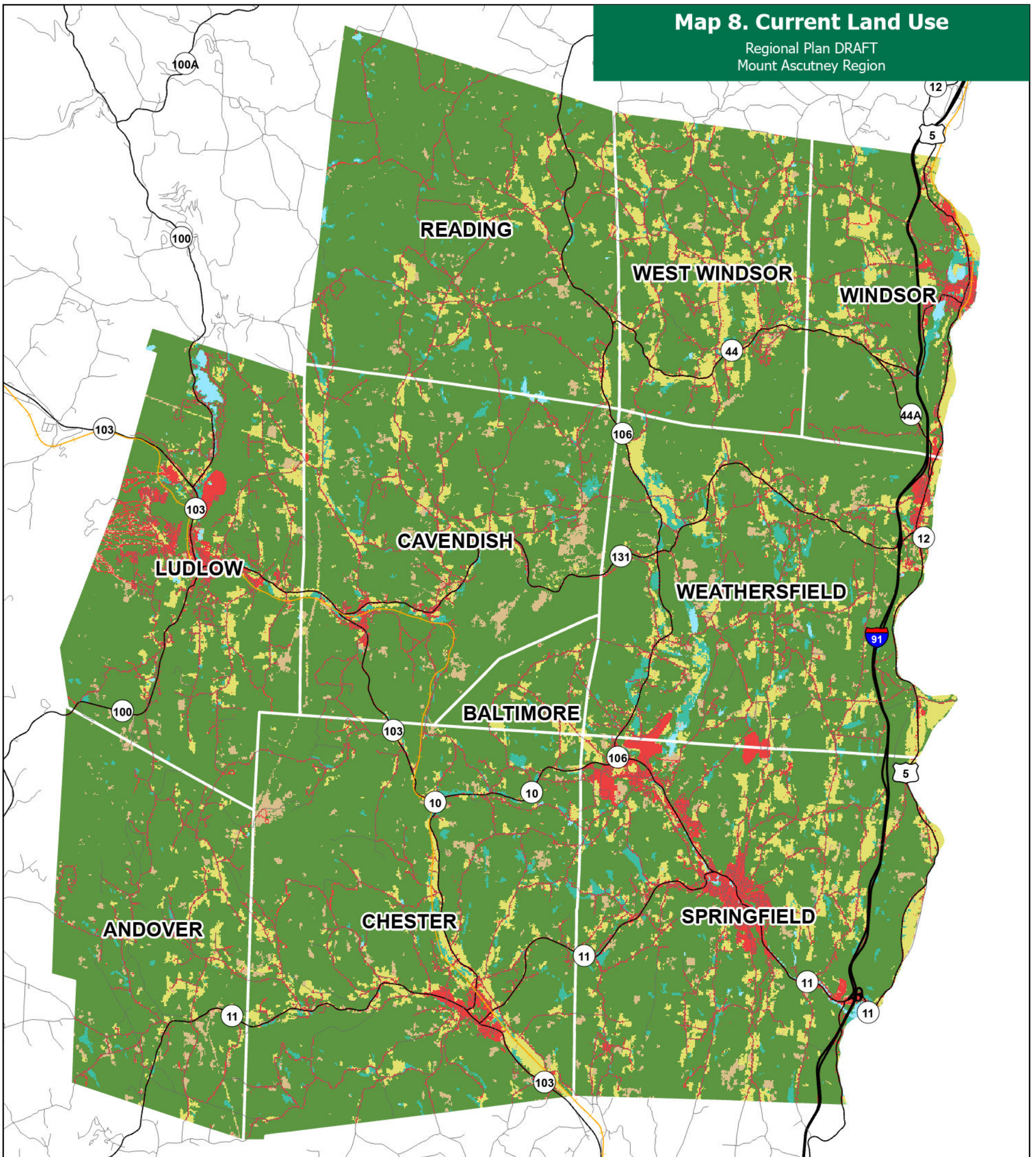


# Map 8. Current Land Use

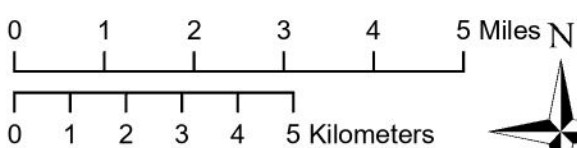
Regional Plan DRAFT  
Mount Ascutney Region



- Developed
- Forest
- Agricultural
- Open Land (brush, transitional, or barren)
- Wetlands (including wooded wetlands)
- Water

Current land uses in the Mount Ascutney Region including developed areas, forests, agricultural areas, and wetlands. This is a simplified version of data from the 2019 National Land Cover Database (NLCD). The NLCD is provided by the Multi-Resolution Land Characteristics (MRLC) consortium, a group of federal agencies who coordinate and generate consistent and relevant land cover information at the national scale. NLCD data is collected by LandSat and has a resolution of 30 meters.

Data Sources:  
Boundaries (VCGI, 2016; NH Granit, 2014); Roads (VTrans, 2019); Land Cover generalized from MRLC (NLCD, 2019)



1 inch equals 2 miles



PO Box 320, Ascutney, VT 05030  
www.marcvt.org

VT State Plane, Meters, NAD 83

Map drawn January 11, 2022  
Plan Adopted: October 14, 2022  
Plan Effective: November 18, 2022