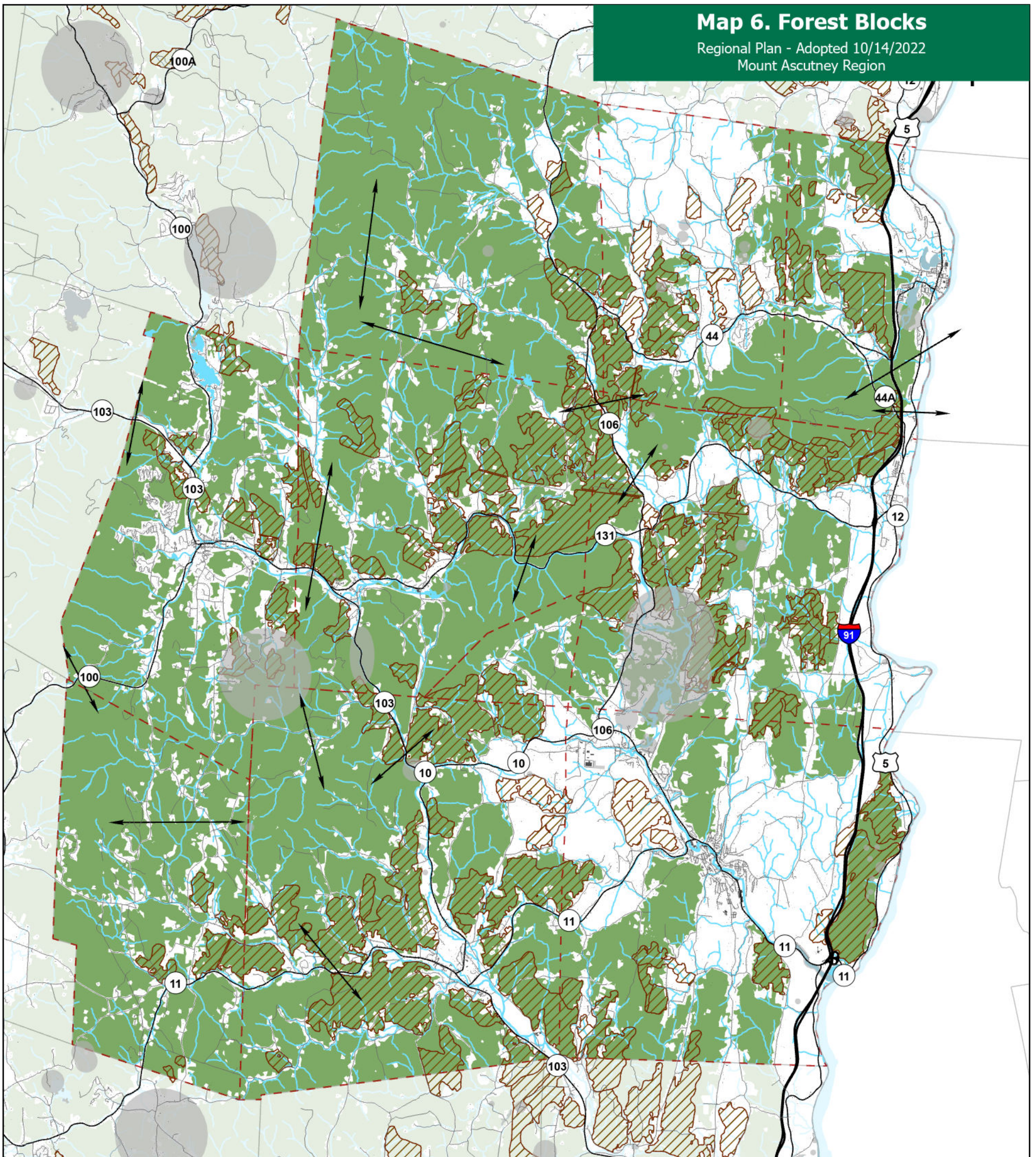


# Map 6. Forest Blocks

Regional Plan - Adopted 10/14/2022  
Mount Ascutney Region



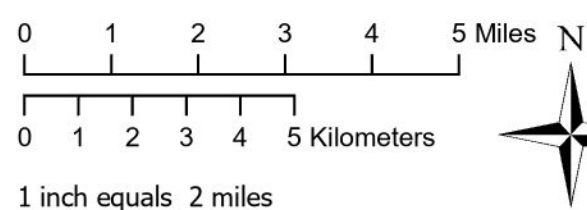
- Potential Wildlife Crossing Areas
- Rare, Threatened, and Endangered Species
- Deer Wintering Areas
- Building Footprints
- Priority Forest Blocks and Habitat Connectors

The priority forest blocks and habitat connectors presented here and referred to in the text of the Regional Plan were derived from four separate but overlapping datasets developed by the Vermont Agency of Natural Resources (ANR) for Vermont Conservation Design and BioFinder. The four datasets combined here are: Highest Priority Interior Forest Blocks, Priority Interior Forest Blocks, Highest Priority Connectivity Blocks, and Priority Connectivity Blocks.

**Data Sources:**  
Forest Blocks and Habitat Connectors-Derived from VT Conservation Design (ANR, 2020); Potential Wildlife Crossing Areas (RPC, 2020); Rare, Threatened and Endangered Species (ANR, 2019); Deer Wintering Areas (ANR, 2016); Boundaries (VCGI, 2016; NH Granit, 2014); Roads (VTrans, 2019); Building Footprints (VCGI, 2016), Waterbodies (VCGI, 2019)

From VT ANR: Vermont Conservation Design is the data and the vision that is delivered through the BioFinder map interface. It is a tool that identifies features at the landscape and natural community scales that are necessary for maintaining an ecologically functional landscape – a landscape that conserves current biological diversity and allows species to move and shift in response to climate and land-use changes.

For more on BioFinder: <https://anr.vermont.gov/maps/biofinder/>



PO Box 320, Ascutney, VT 05030  
[www.marcvt.org](http://www.marcvt.org)

VT State Plane, Meters, NAD 83

Map drawn: March 9, 2021  
Plan Adopted: October 14, 2022  
Plan Effective: November 18, 2022