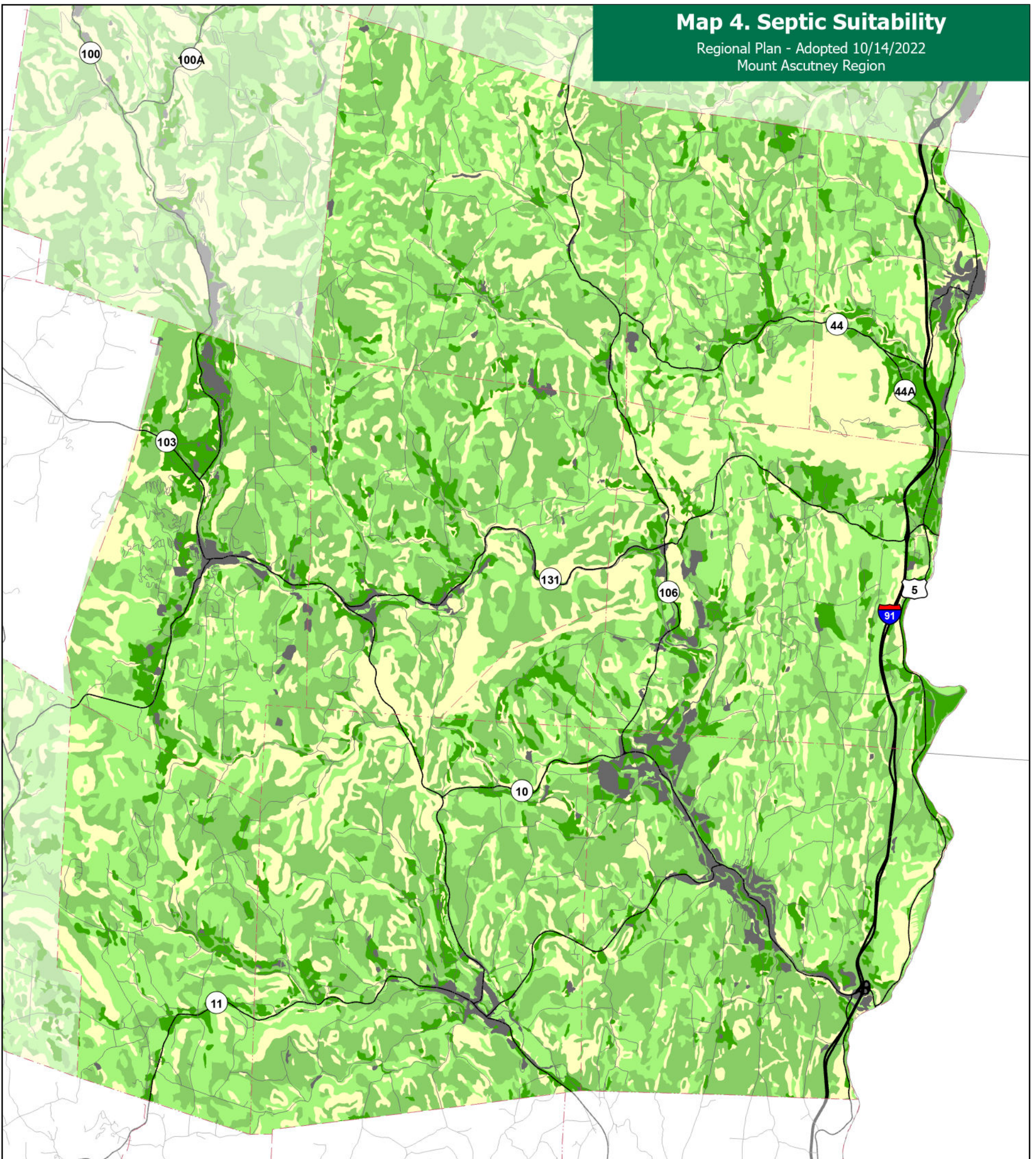


Map 4. Septic Suitability

Regional Plan - Adopted 10/14/2022
Mount Ascutney Region



Onsite Septic System Potential

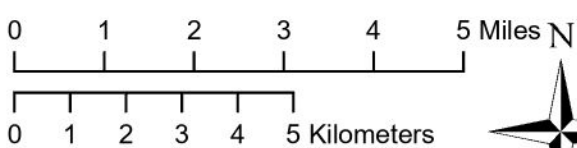
- Well suited
- Moderately suited
- Marginally suited
- Not suited
- Not rated

Roads

- Interstate
- US and State Highway; and Class 1 Town Highway
- All other Roads and ROW

Data Sources:

Onsite Sewage Disposal Soil Ratings, Windsor County Only (NRCS, 2016); Boundaries (VCGI, 2016; NH Granit, 2014); Roads (VTrans, 2019)



1 inch equals 2 miles



PO Box 320, Ascutney, VT 05030
www.marcvt.org

VT State Plane, Meters, NAD 83

Map drawn: January 5, 2021
Plan Adopted: October 14, 2022
Plan Effective: November 18, 2022