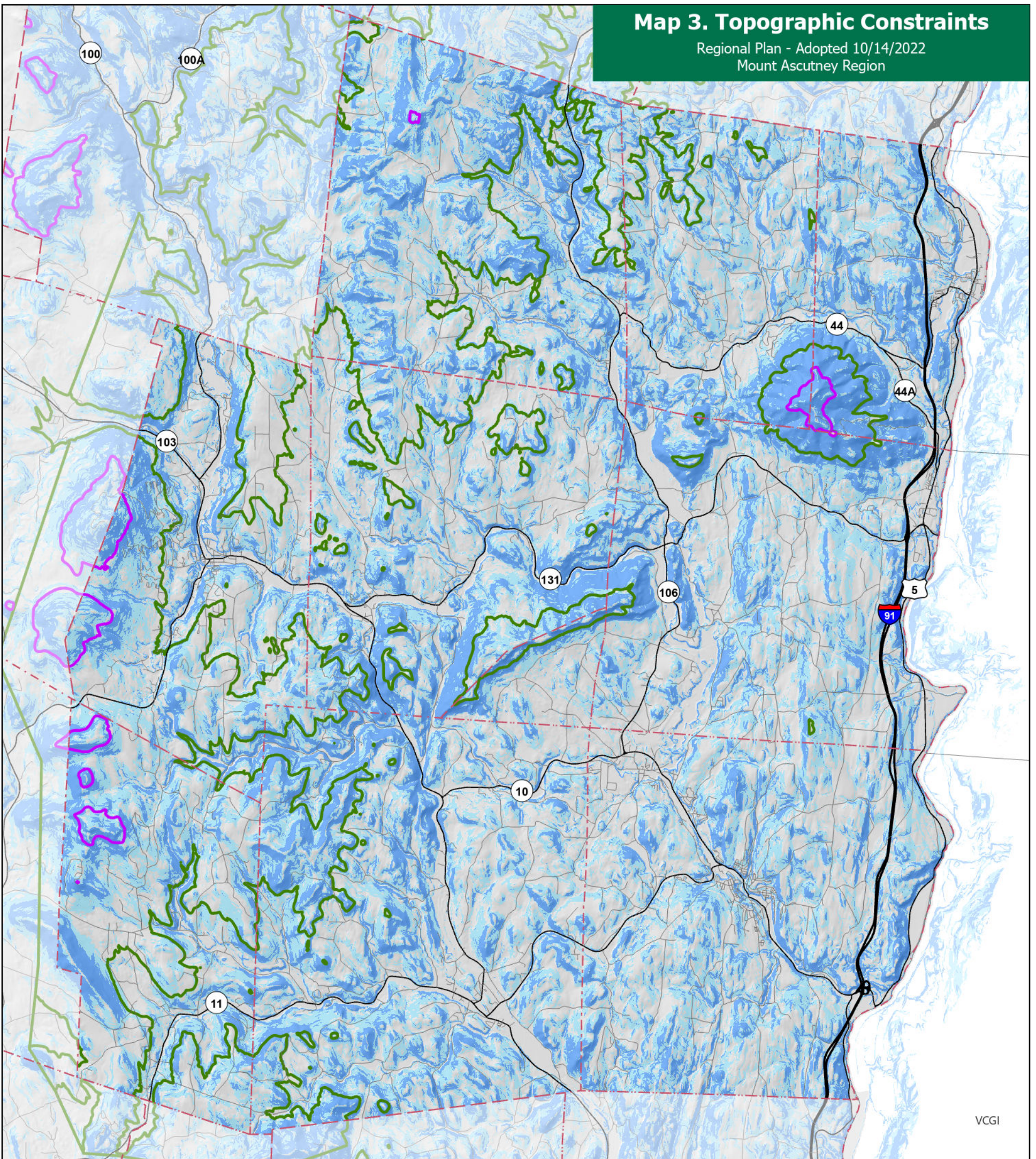




Map 3. Topographic Constraints

Regional Plan - Adopted 10/14/2022
Mount Ascutney Region





VCGI

Contour Lines

-  2,500ft elevation
-  1,500ft elevation

Slope

Note that slopes of 15% are not displayed.

-  16-24% slopes
-  Over 24% slopes

Data Sources:

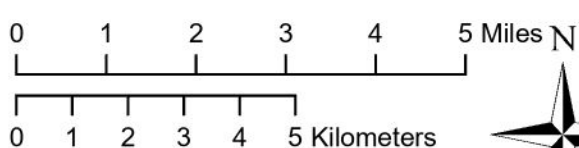
Contour Lines (VCGI, 2012); Slopes derived from 10m DEM (USGS, 2012); Hillshade (VCGI, 2016); Boundaries (VCGI, 2016; NH Granit, 2014); Roads (VTrans, 2019)



PO Box 320, Ascutney, VT 05030
www.marcvt.org

VT State Plane, Meters, NAD 83

Map drawn: January 5, 2021
Plan Adopted: October 14, 2022
Plan Effective: November 18, 2022



1 inch equals 2 miles