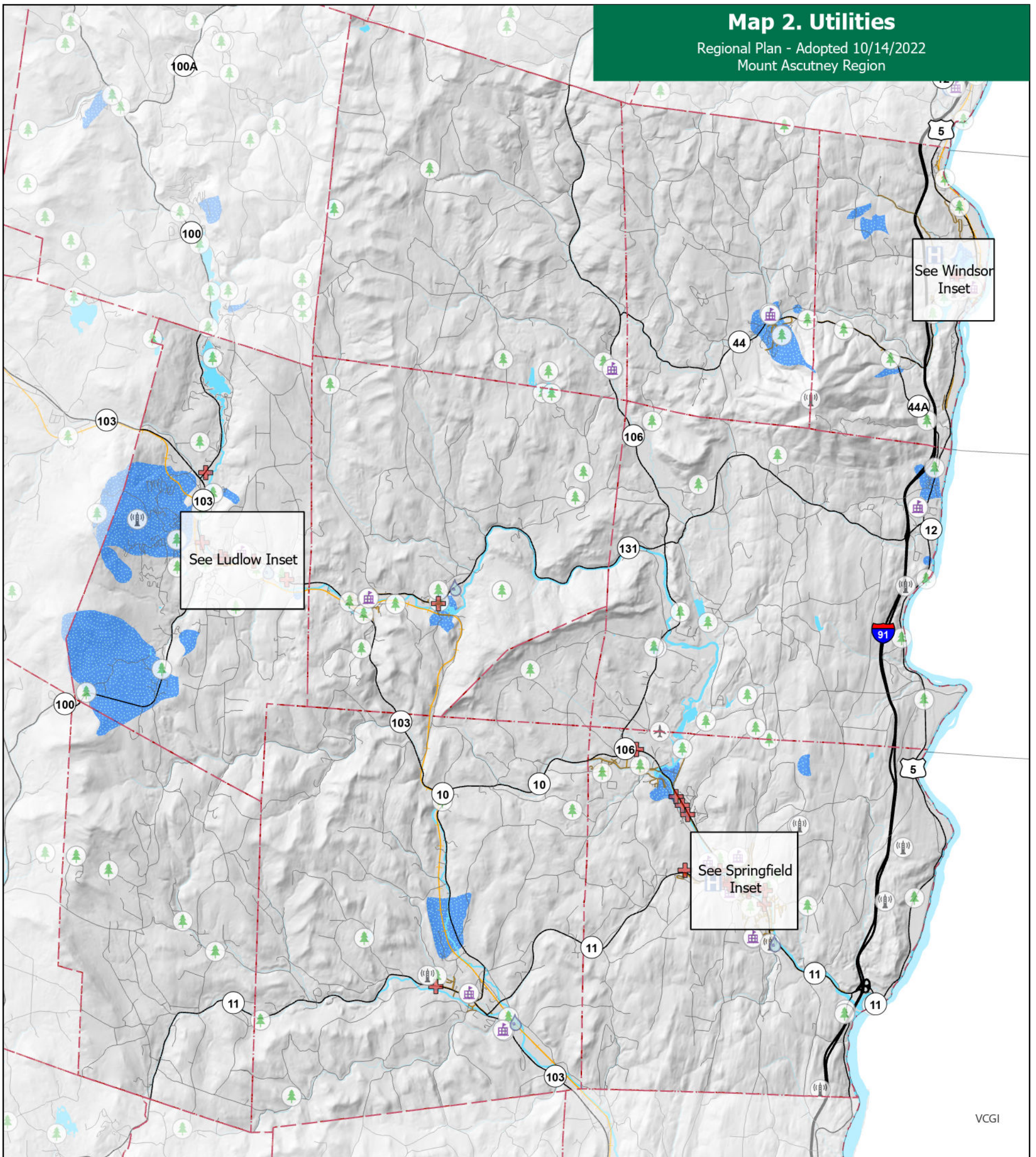
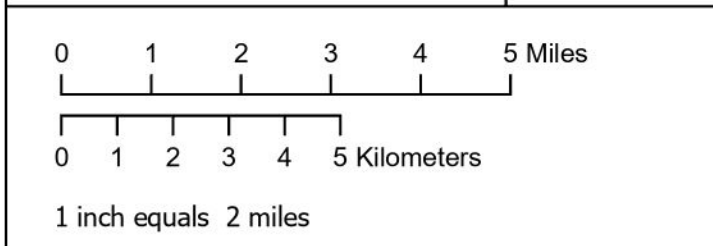
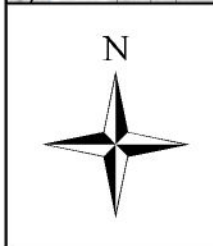
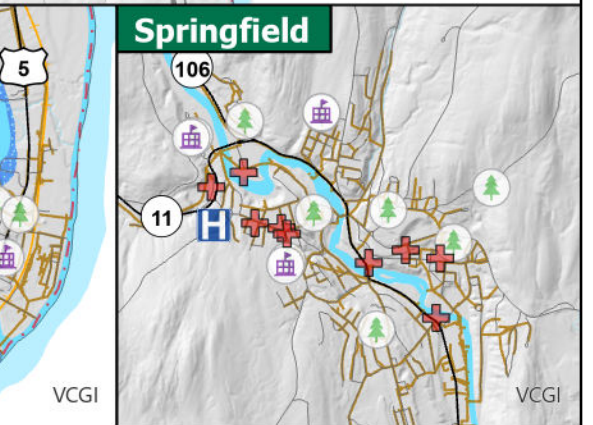
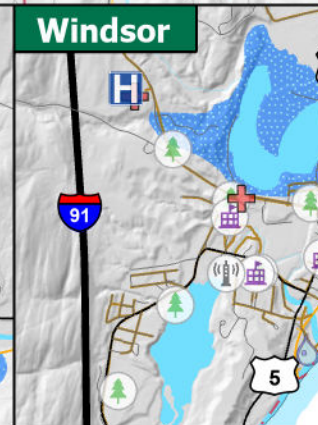
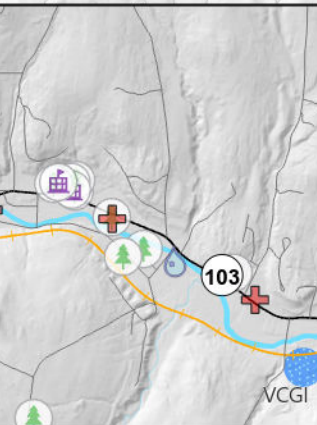
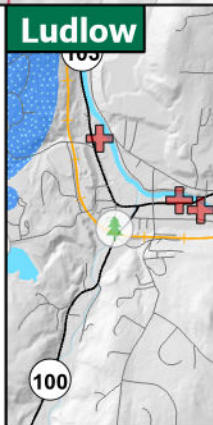


Map 2. Utilities

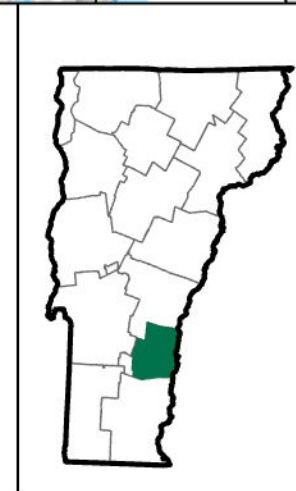
Regional Plan - Adopted 10/14/2022
Mount Ascutney Region



- Public Wastewater Facilities
- Wastewater Lines
- Telecomm Tower
- Hospital
- Health Clinic
- Schools
- Airports
- Outdoor Recreation Sites
- Groundwater Protection Areas
- Interstate
- US and State Highway; and Class 1 Town Highway
- All other Roads and ROW
- Railroad



Data Sources:
Wastewater Facilities (ANR, 2016);
Wastewater Lines (ANR, 2020);
Telecommunications Towers (VCGI, 2010);
Hospitals and Health Clinics (E911, 2018);
Schools (VT Agency of Education, 2020);
Airports (VTrans, 2018);
Recreation Sites (ANR, 2016);
Groundwater SPAs (ANR, 2016);
Boundaries (VCGI, 2016; NH Granit, 2014);
Roads (VTrans, 2019);
Waterbodies (VCGI 2019);
Hillshade (VCGI, 2016)



Mount Ascutney Regional Commission
PO Box 320, Ascutney, VT 05030
www.marcvt.org
VT State Plane, Meters, NAD 83
Map drawn: January 15, 2021
Plan Adopted: October 14, 2022
Plan Effective: November 18, 2022