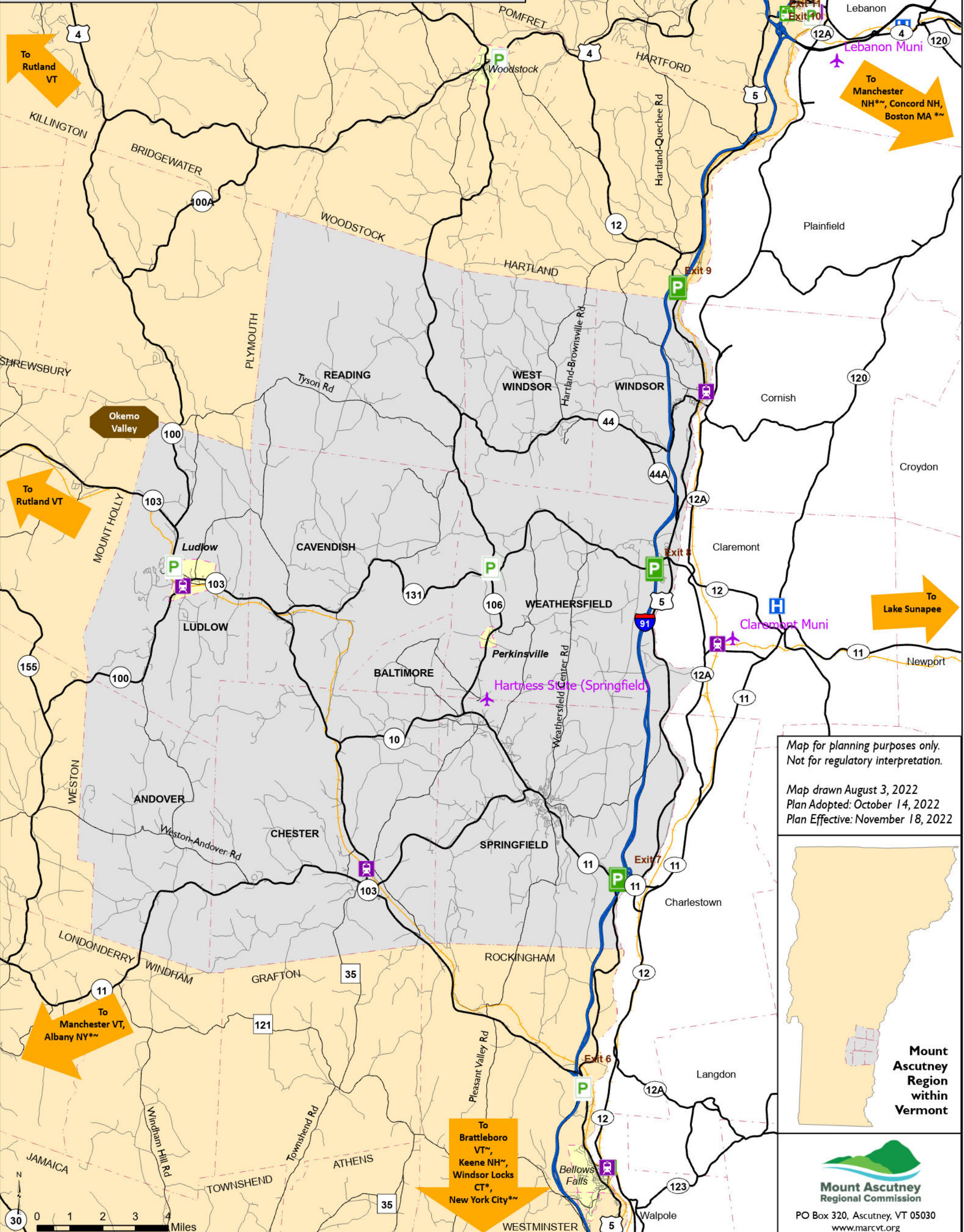


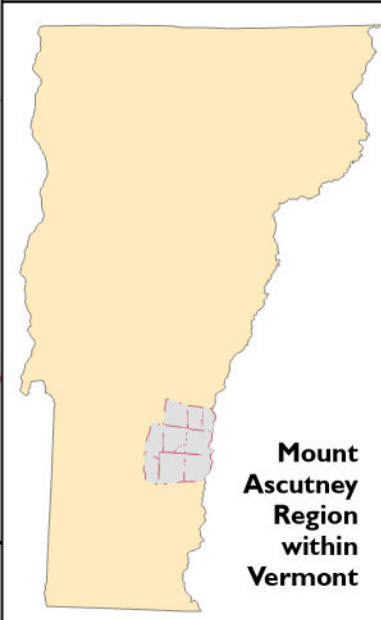
Map 10. Mount Ascutney Regional Transportation Network
Regional Plan - Adopted 10/14/2022

State Park & Ride Lot	Incorporated Village Boundary (VT)
Municipal Park & Ride Lot	Town (within Region)
Out-of-State Park & Ride Lot	Town Boundary (remainder of VT)
Rail Station	Town Boundary (NH)
Airport * denotes place with international airport	Interstate
Intercity Bus Stop ~ denotes place with intercity bus connection	Major Roads
Railroad	Roads of Regional Significance
	Other Roads (Region Only)
	Hospital

Data sources: Road centerline (VTrans 2021, NHDOT 2022), Railroads (VTrans 2020, NHDOT 2022), Town and village boundary (VCGI 2016, NHGranit 2009), Hospitals (E911 2018, NHGranit 2022), Park and Rides (VTrans 2022), Intercity Bus Station (RPC 2013), Airports (FAA 2022)



Map for planning purposes only.
 Not for regulatory interpretation.
 Map drawn August 3, 2022
 Plan Adopted: October 14, 2022
 Plan Effective: November 18, 2022



Mount Ascutney Region within Vermont

Mount Ascutney Regional Commission
 PO Box 320, Ascutney, VT 05030
 www.marvct.org

Data sources: Road centerline (VTrans 2021, NHDOT 2022), Railroads (VTrans 2020, NHDOT 1993), Town boundary (VCGI 2012, NHGranit 2009), Buildings - E911 sites (VCGI 2013), Hospitals (VCGI 1998, NHGranit 2008), Park and Rides (RPC 2012), Airports (VTrans 2004, RPC 2012 for NH)