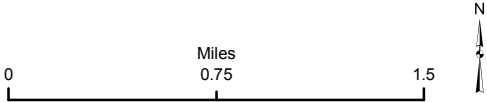


Zoning

- Stone Village
- Village Center
- Residential (20,000 sq ft)
- Residential (40,000 sq ft)
- Residential (3 acres)
- Residential Commercial
- Adaptive (3 acres)
- Commercial Industrial
- Conservation Residential
- Forest

- 2010 Parcel
- Water (in 2010 Parcels)
- River/Stream
- Railroad



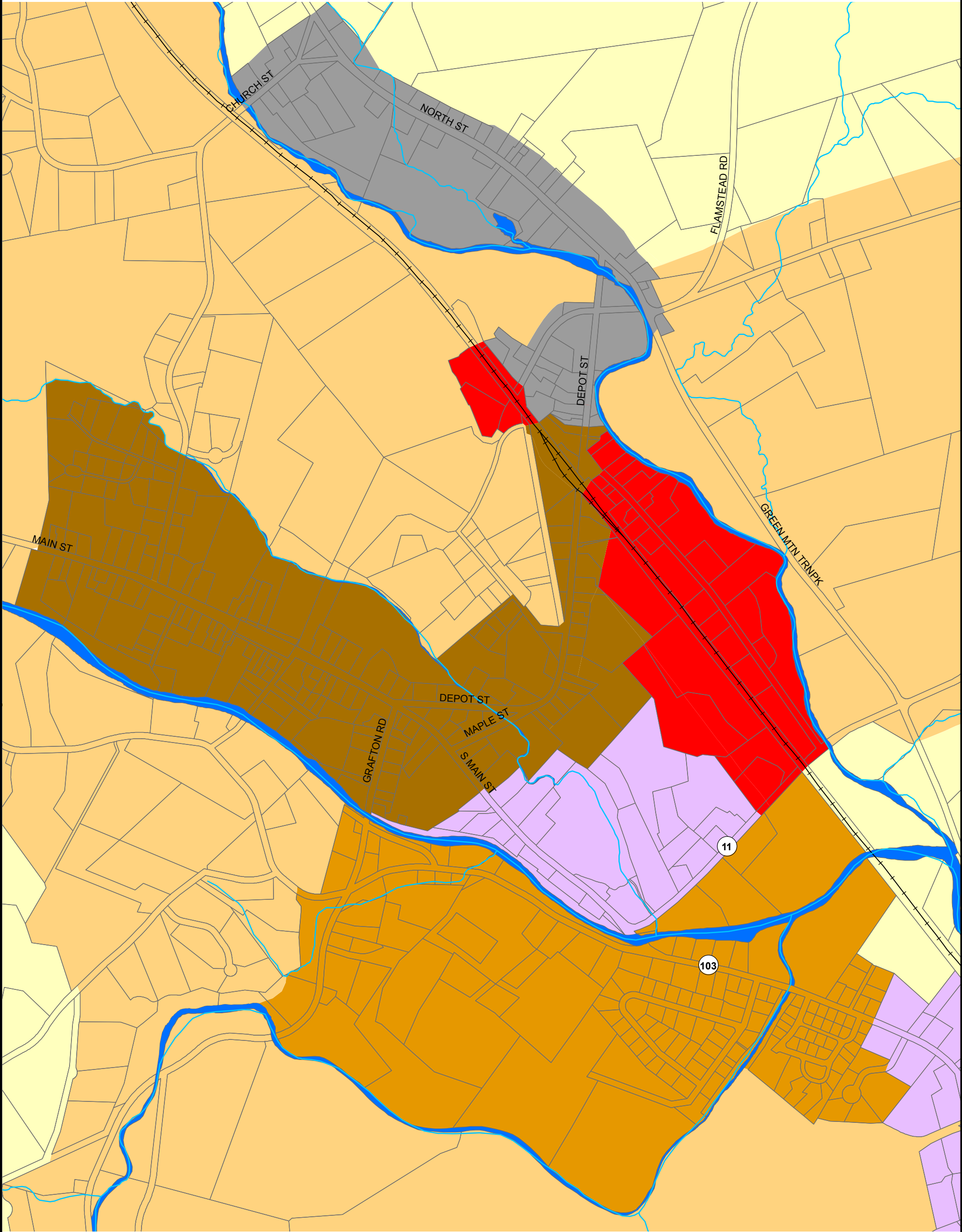
Data sources: Zoning (RPC 2017), Parcels (2010),
Road names (VTrans/VCGI 2011), Railroad (VTrans/ VCGI 2003),
Streams (VHD/VCGI 2008)

VT State Plane. Meters, NAD 83

For planning purposes only.
Not for regulatory interpretation.

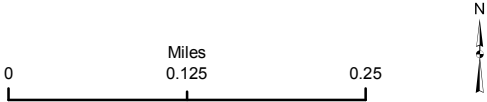
Map drawn: April 4, 2017





- Zoning**

 - Stone Village
 - Village Center
 - Residential (20,000 sq ft)
 - Residential (40,000 sq ft)
 - Residential (3 acres)
 - Residential Commercial
 - Adaptive (3 acres)
 - Commercial Industrial
 - Conservation Residential
 - Forest
- 2010 Parcel
 - Water (in 2010 Parcels)
 - River/Stream
 - Railroad



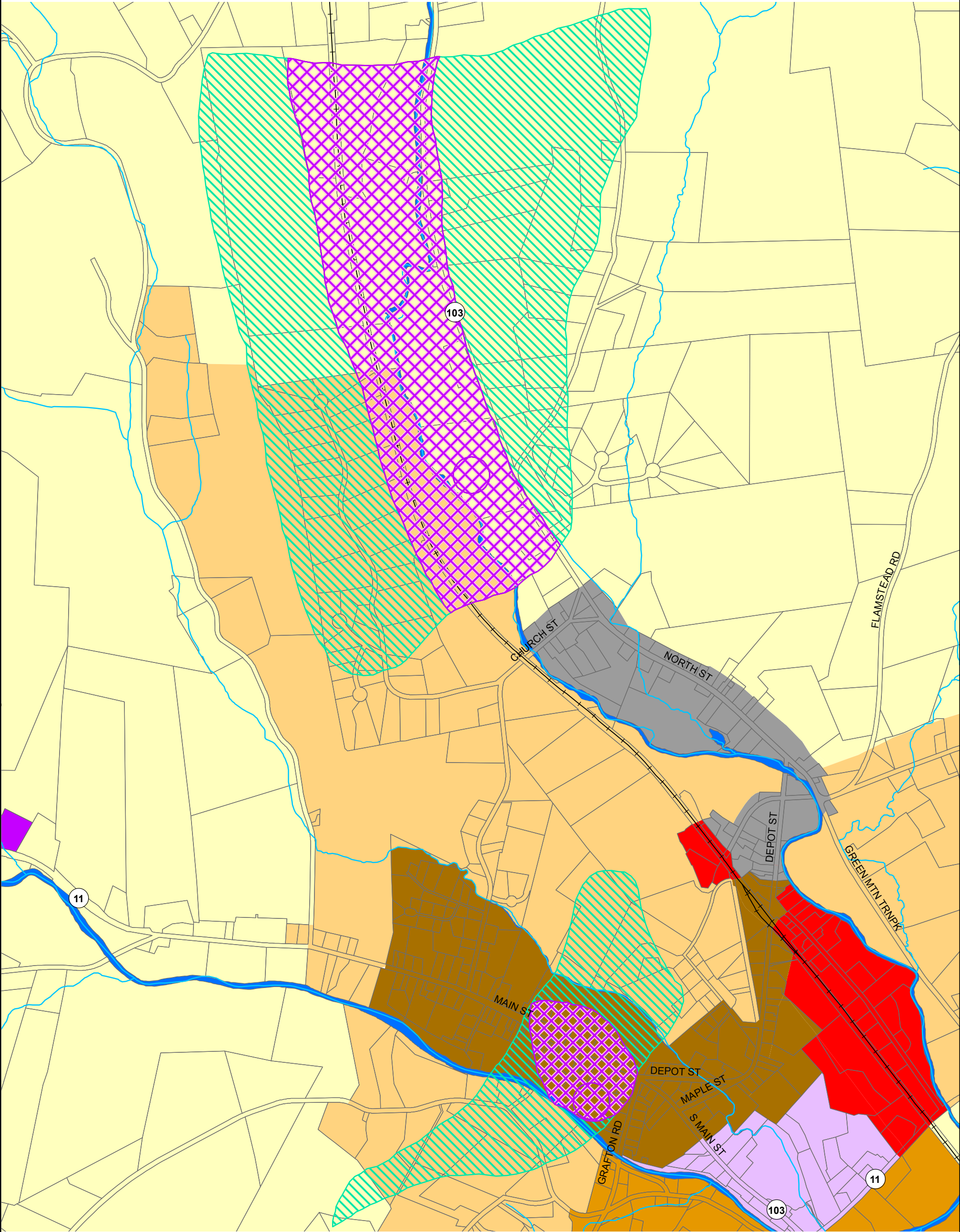
Data sources: Zoning (RPC 2017), Parcels (2010),
Road names (VTrans/VCGI 2011), Railroad (VTrans/ VCGI 2003),
Streams (VHD/VCGI 2008)

VT State Plane. Meters, NAD 83

For planning purposes only.
Not for regulatory interpretation.

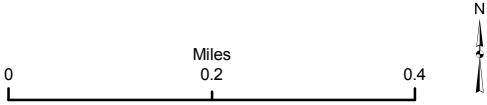
Map drawn: April 4, 2017





- Zoning**
- Stone Village
 - Village Center
 - Residential (20,000 sq ft)
 - Residential (40,000 sq ft)
 - Residential (3 acres)
 - Residential Commercial
 - Adaptive (3 acres)
 - Commercial Industrial
 - Conservation Residential
 - Forest

- Overlay Districts**
- Primary Aquifer Protection Area (APO)
 - Secondary Aquifer Protection Area (APO)
 - 2010 Parcel
 - Water (in 2010 Parcels)
 - River/Stream
 - Railroad



Data sources: Zoning (RPC 2017), Parcels (2010),
Road names (VTrans/VCGI 2011), Railroad (VTrans/ VCGI 2003),
Streams (VHD/VCGI 2008)

VT State Plane. Meters, NAD 83

For planning purposes only.
Not for regulatory interpretation.

Map drawn: April 4, 2017

