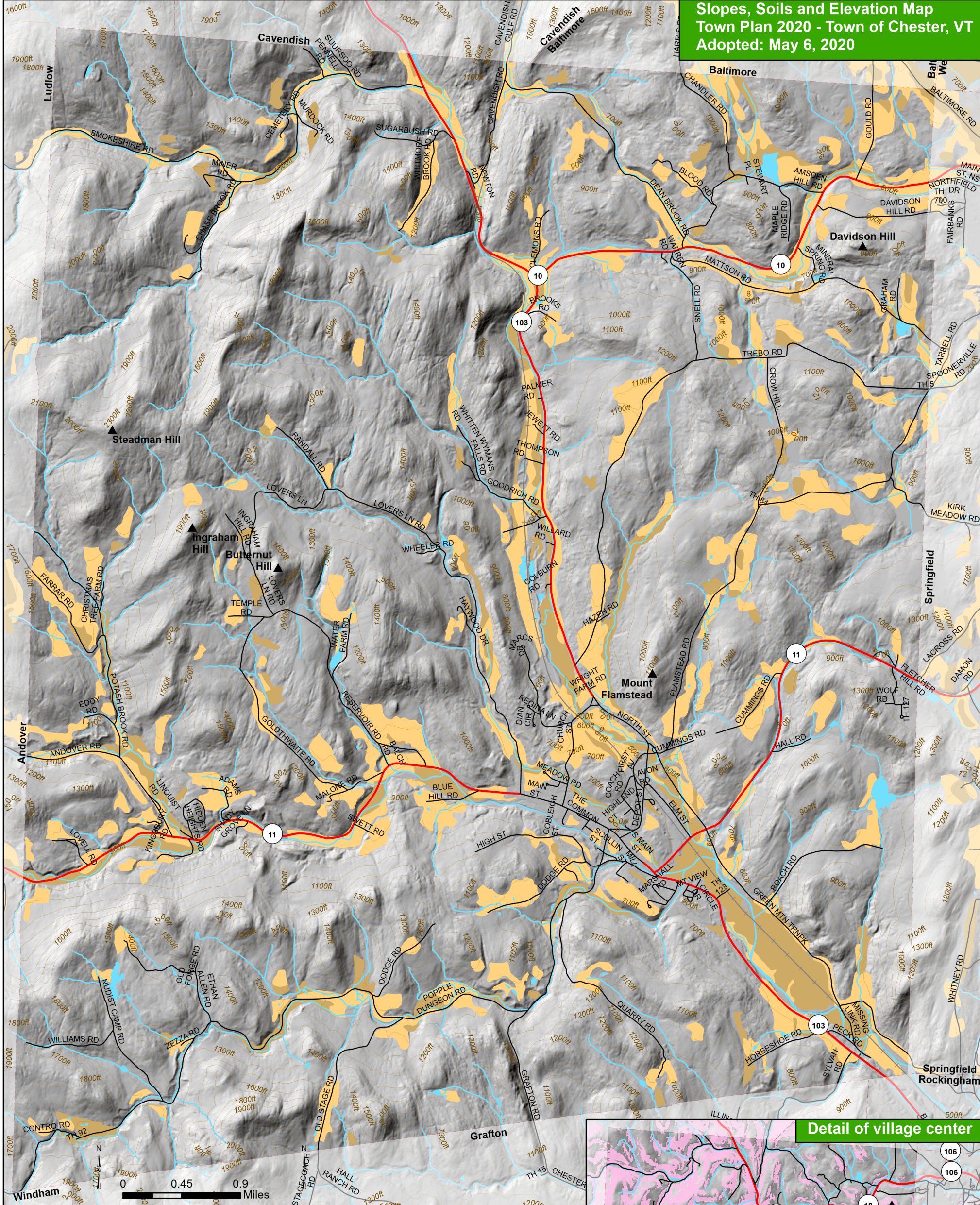
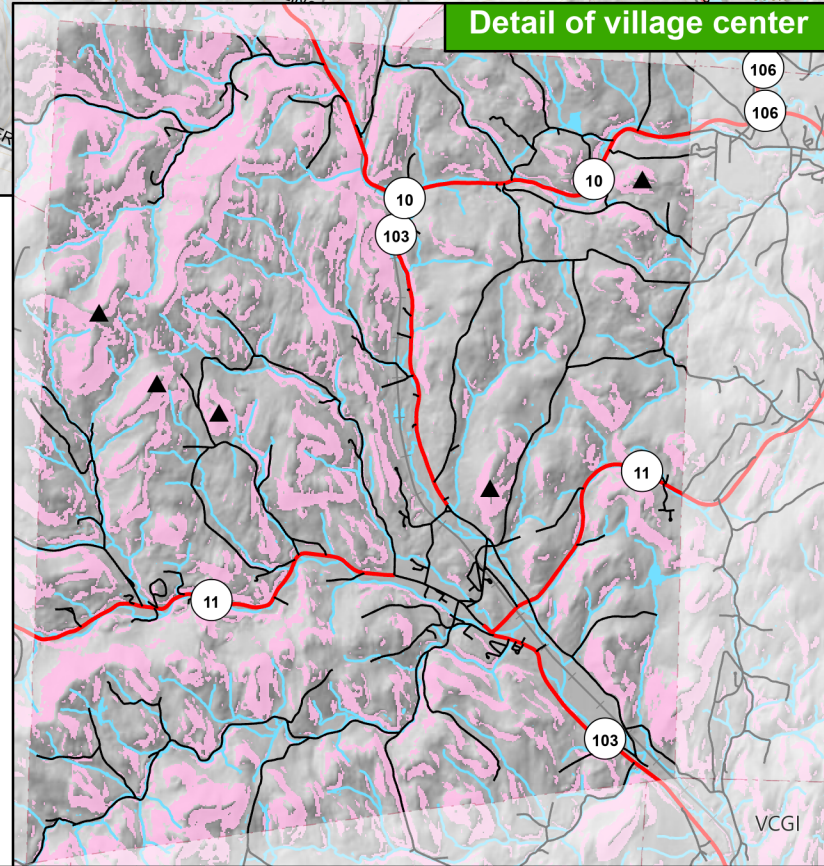


**Slopes, Soils and Elevation Map
Town Plan 2020 - Town of Chester, VT
Adopted: May 6, 2020**



Detail of village center



- ▲ Hill or Mountain Summit
- 100ft Contour
- ≤ 23.9
- Steep Slopes (24% and over) (small map only)
- Prime Agricultural Soils
- Agricultural Soils of Statewide Importance
- State Highway
- Town Highway (C1,2,3)
- Railroad
- Rivers and Streams
- Lakes and Ponds
- Town Boundary

Data Sources: Contours, steep slopes and hillshade (VCGI 2016), Agricultural Soils (NRCS 2011), Roads (VTrans 2014), Railroad (VTrans 2014), Rivers and waterbodies (VHD 2008), Town Boundary (VCGI 2012 and RPC 2014 using Parcels 2014)

VT State Plane Meters, NAD 83

Map for planning purposes only.
Not for regulatory interpretation.



DRAFT Map drawn Feb 11, 2019
www.swcrpc.org