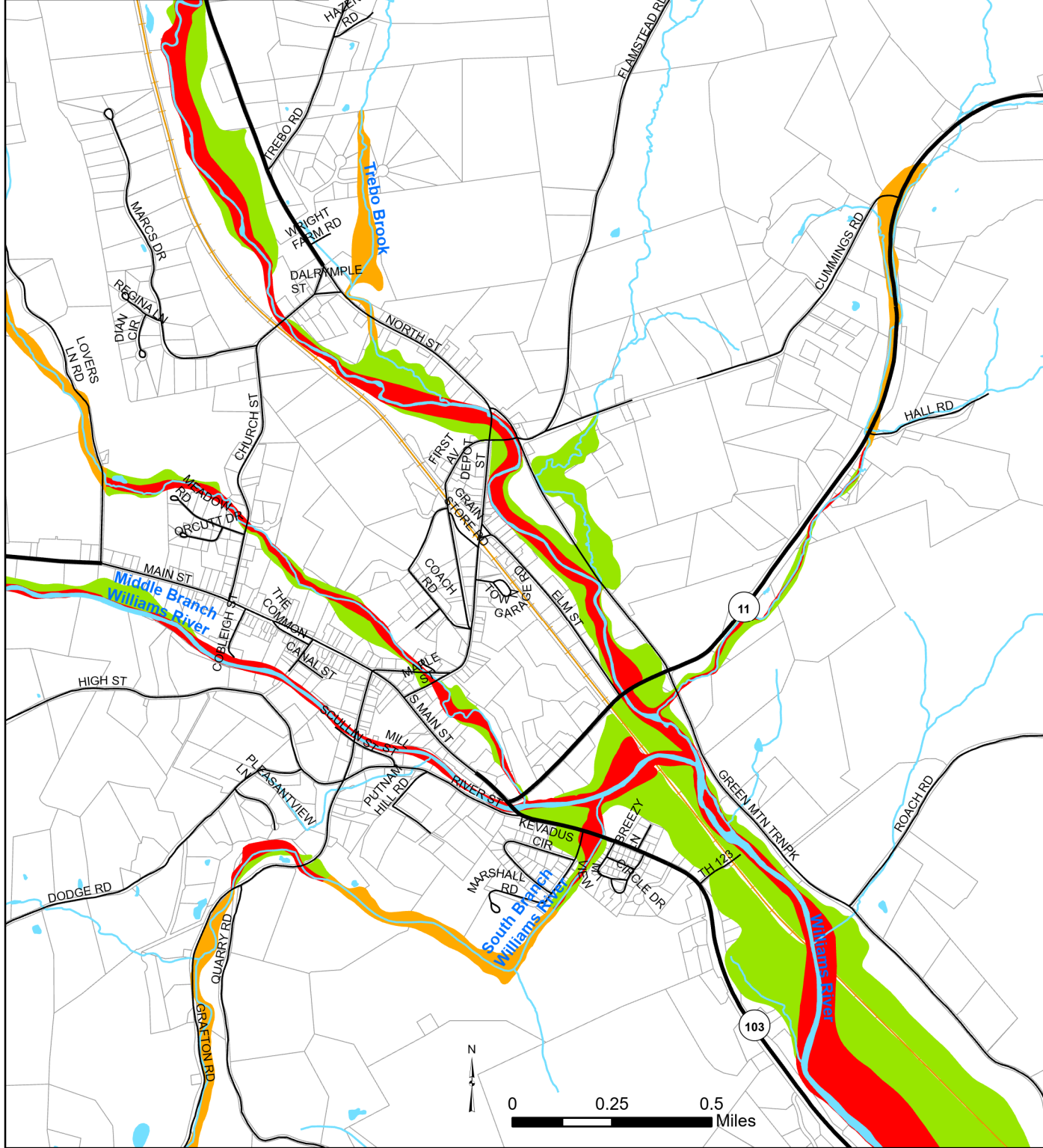


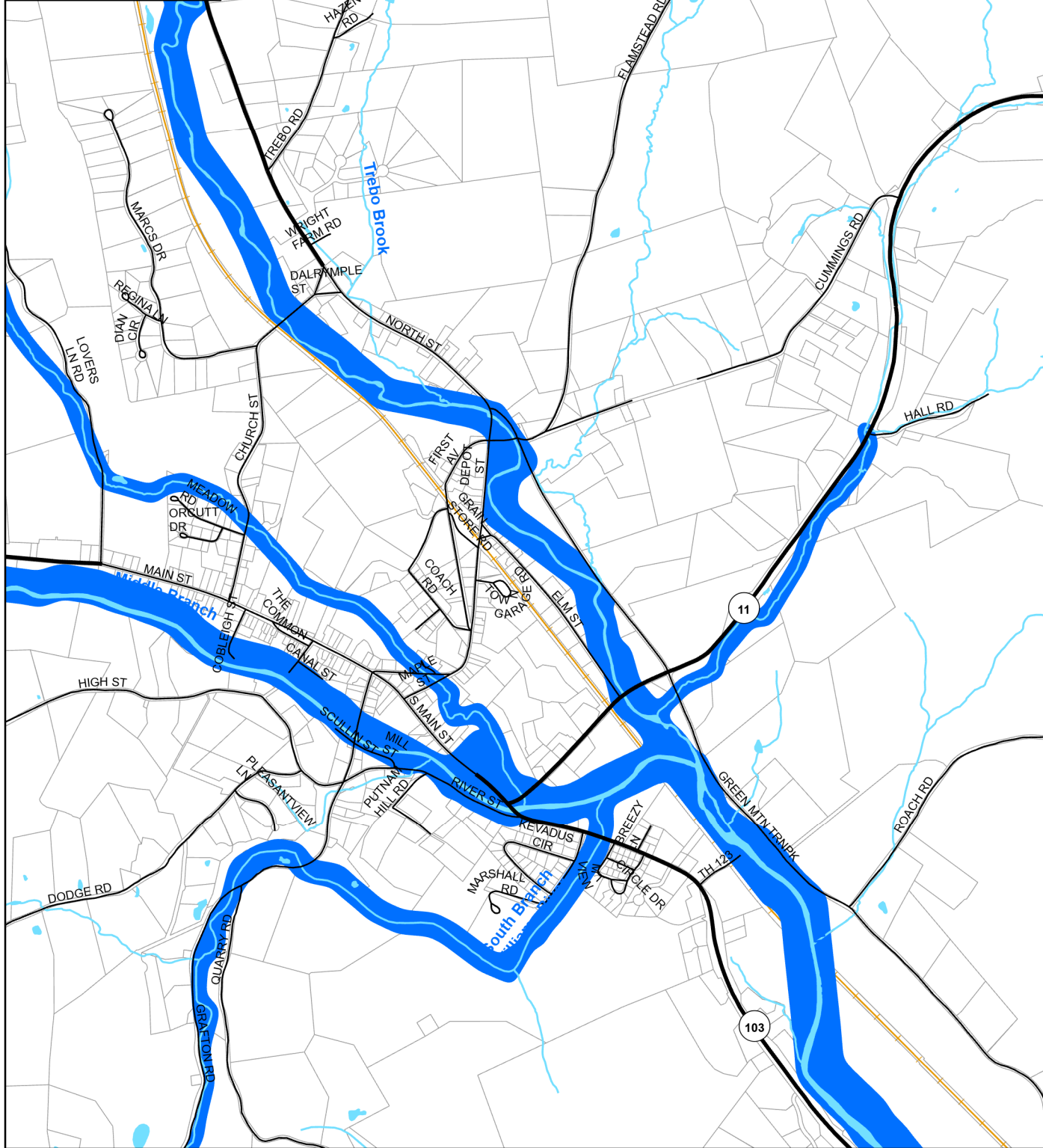
Floodway and Floodplain



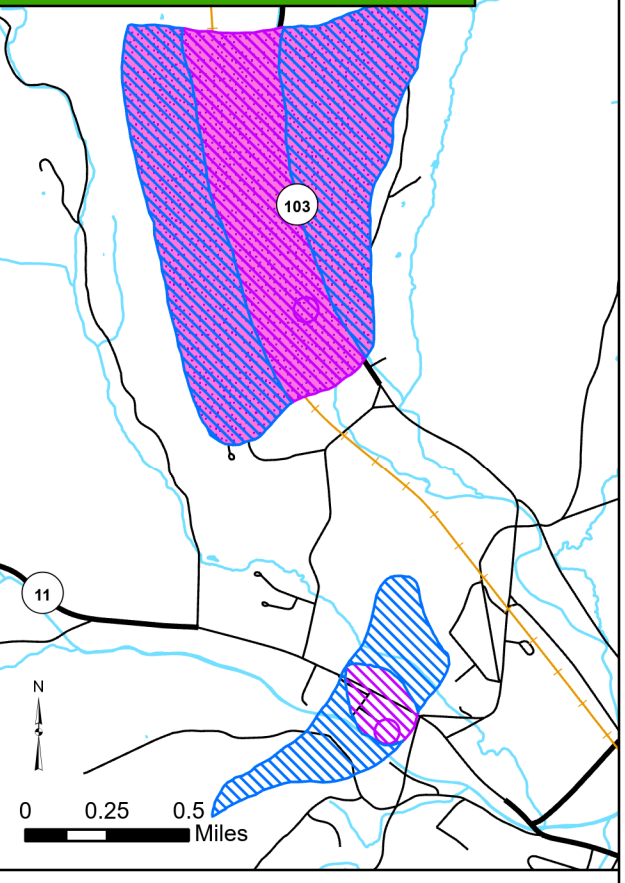
Water Resources Map - Village Town Plan 2020 - Town of Chester, VT Adopted: May 6, 2020

- Floodway (Zone AE) (Top Left Map)
 - Floodplain (Zone A) (Top Left Map)
 - Floodplain (Zone AE) (Top Left Map)
 - River Corridor (Bottom Left Map)
 - Primary Aquifer Protection Area (Below)
 - Secondary Aquifer Protection Area (Below)
 - Groundwater Protection Area (Below)
-
- State Highway
 - Town Highway (C1,2,3)
 - Railroad
 - Rivers and Streams
 - Lakes and Ponds
 - Town Boundary
 - Parcels

River Corridor



Groundwater Protection Area



Special Flood Hazard Areas (SFHA), including the Floodway and Floodway Fringe (i.e. Floodplain), are shown on this map for planning purposes only. This is not the official map for regulatory flood hazards.

There are no surface water protection areas within the Town of Chester.

Data Sources: Dams (ANR 2008), Floodplain and Floodway (Special Flood Hazard Areas) (FEMA 2008), River Corridor (ANR January 2, 2015), Groundwater Protection Area (also known as Wellhead Protection Areas) (ANR 2011), Surface Water Protection Area (ANR 2010), Roads (VTrans 2014), Aquifer Protection Zoning Overlay District (Adopted 2014) (SWCRPC 2014), Railroad (VTrans 2014), Rivers and waterbodies (VHD 2008), Parcels (CA 2014), Town Boundary (VCGI 2012 and RPC 2014 using Parcels 2014)

VT State Plane Meters, NAD 83
 Map for planning purposes only.
 Not for regulatory interpretation.
 Map drawn Feb 11, 2016

