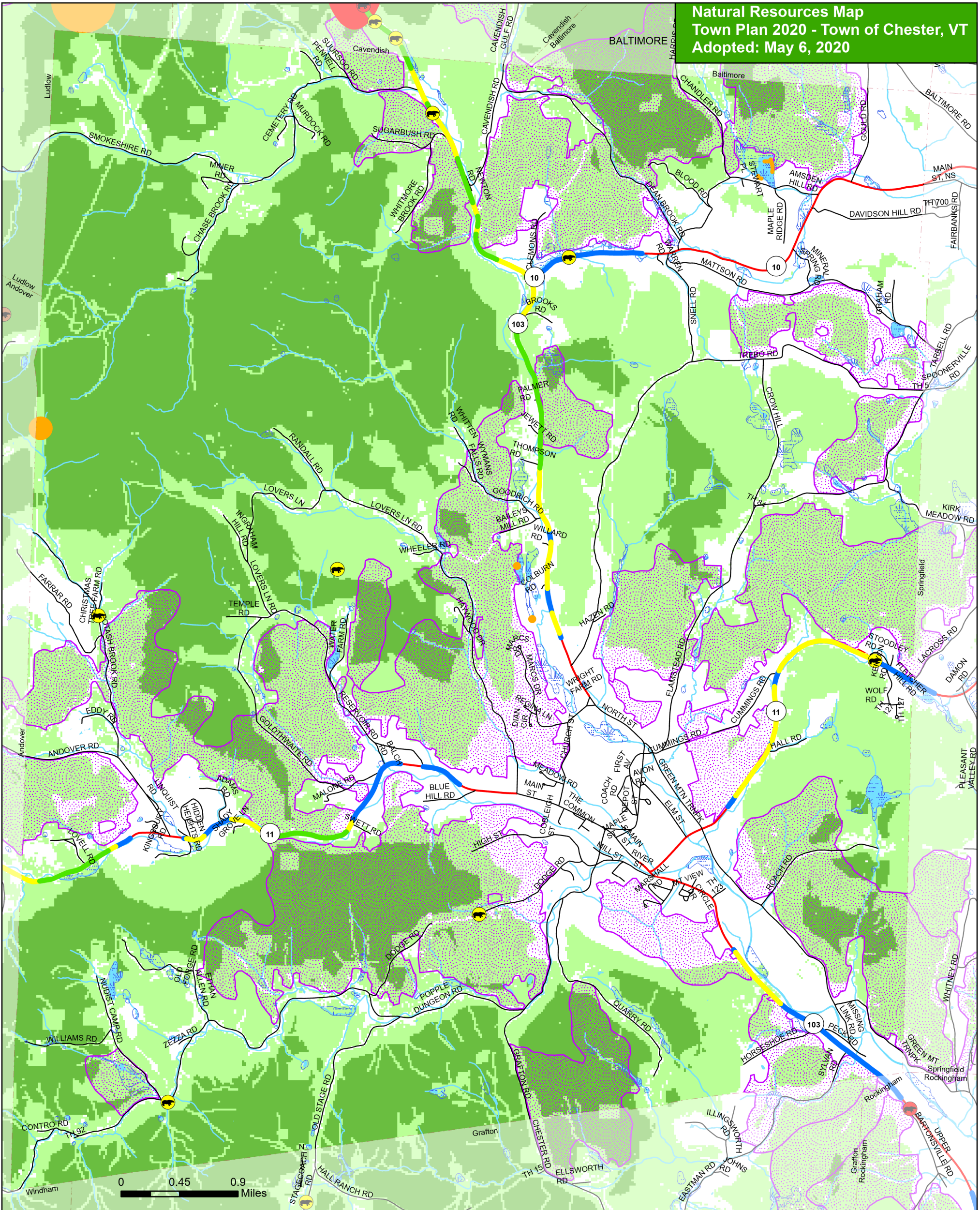


**Natural Resources Map  
Town Plan 2020 - Town of Chester, VT  
Adopted: May 6, 2020**



- Bear Collision
- Bear Travel
- Bear Mast
- State Threatened Species
- State Endangered Species
- Deer Wintering Area
- Wetland
- Wildlife Crossing Value (out of 10)**
- 5 - 5.5
- 6 - 6.5
- 7 - 7.5
- 8 - 8.5
- Wildlife Habitat Suitability (out of 10)**
- 0 - 6
- 6.01 - 8
- 8.01 - 10

- State Highway
- Town Highway (C1,2,3)
- Rivers and Streams
- Lakes and Ponds
- Town Boundary

*Note: Some data, eg wetlands and vernal pools, is incomplete. Further study may be needed prior to applying for permits to develop or make changes to the land. Currently no vernal pools have been identified in Chester.*

*Data Sources: Threatened and Endangered Species (ANR 2015), Bear Collision (ANR 2004), Bear Travel/ Crossing Area (ANR 2004), Bear Mast (ANR 2001), Biofinder (ANR 2013), Vernal Pools (SN6 component of Biofinder 2013), Wetlands (VSWI, ANR 2010), Deer Wintering Areas (ANR 2011), Wildlife Habitat Suitability (ANR 2006), Wildlife Crossing Value (ANR 2006), Waterbodies (50ft buffer on VHD 2008), Roads (VTrans 2014), Railroad (VTrans 2014), Rivers and waterbodies (VHD 2008), Parcels (CA 2014), Town Boundary (VCGI 2012 and RPC 2014 using Parcels 2014)*

VT State Plane Meters, NAD 83  
Map for planning purposes only.  
Not for regulatory interpretation.  
Map drawn Feb 11, 2016

