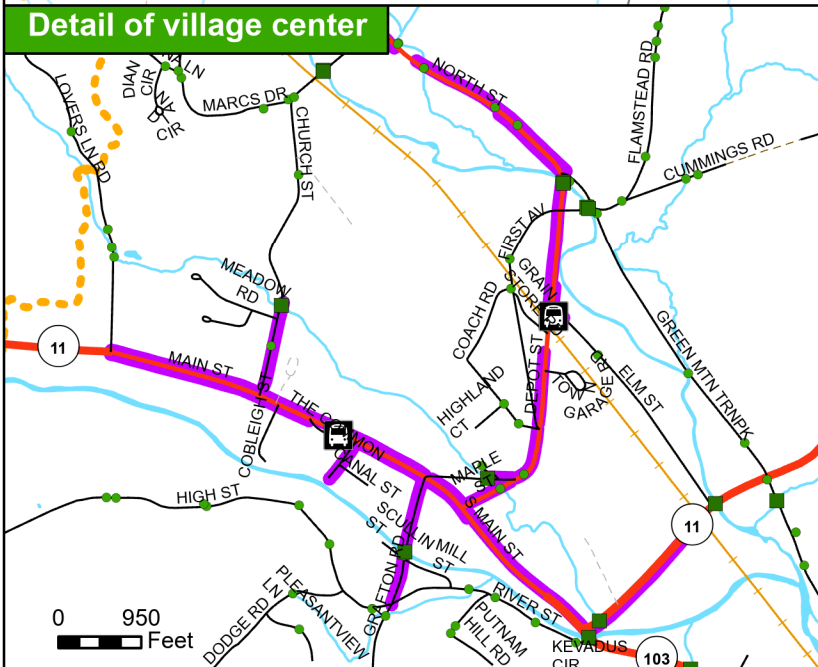
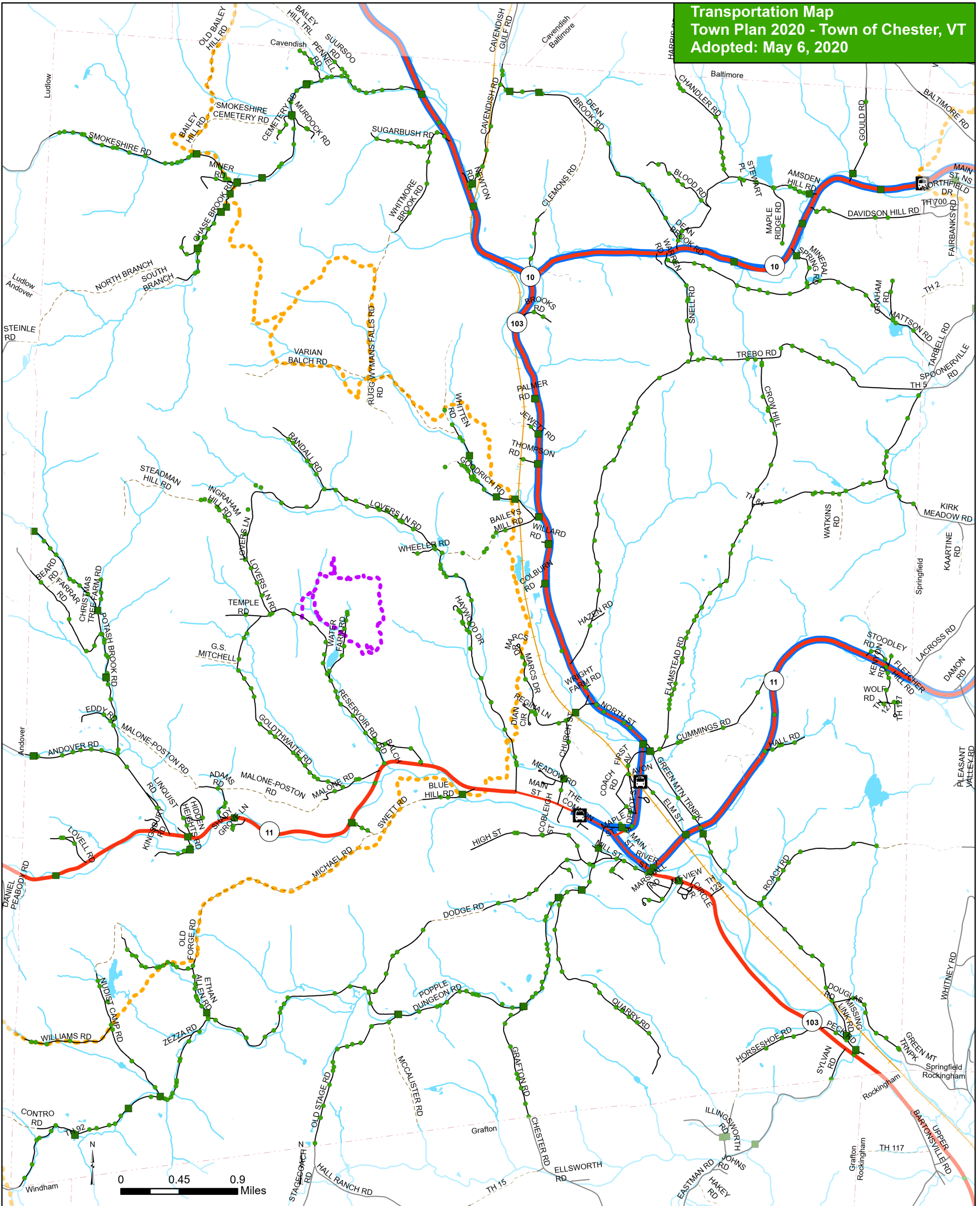


**Transportation Map
Town Plan 2020 - Town of Chester, VT
Adopted: May 6, 2020**



■ Bridge or Very Large Culvert	~ State Highway
● Culvert	~ Class 1 Town Highway
🚌 Bus Stop	~ Class 2 or 3 Town Highway
✈️ Airport	~ Class 4 Town Highway
🚶 VAST Trail	~ Private Roads
🚶 Old Mine Trail	~ Rivers and Streams
🚶 Sidewalk (see small map)	~ Lakes and Ponds
🚶 Bus Route (see large map)	~ Town Boundary
🚶 Railroad	

VT State Plane Meters, NAD 83
Map for planning purposes only. Not for regulatory interpretation.
Map drawn Feb 11, 2016

There are no interstate highways, US highways, traffic signals, airports or Park and Ride lots in Town.

Data Sources: Airports (VTrans 2014), State Bridges and Large Culverts (VTrans 2014), Local Bridges and Culverts (SWCRPC and Town 2015), Old Mine Trail (County Forester 2012), VAST trails (E911 2012), Sidewalk (SWCRPC Pre-2010), Public Transit Stops and Routes (Windham Regional Commission 2014), Roads (VTrans 2014), Railroad (VTrans 2014), Rivers and waterbodies (VHD 2008), Town Boundary (VCGI 2012 and RPC 2014 using Parcels 2014)