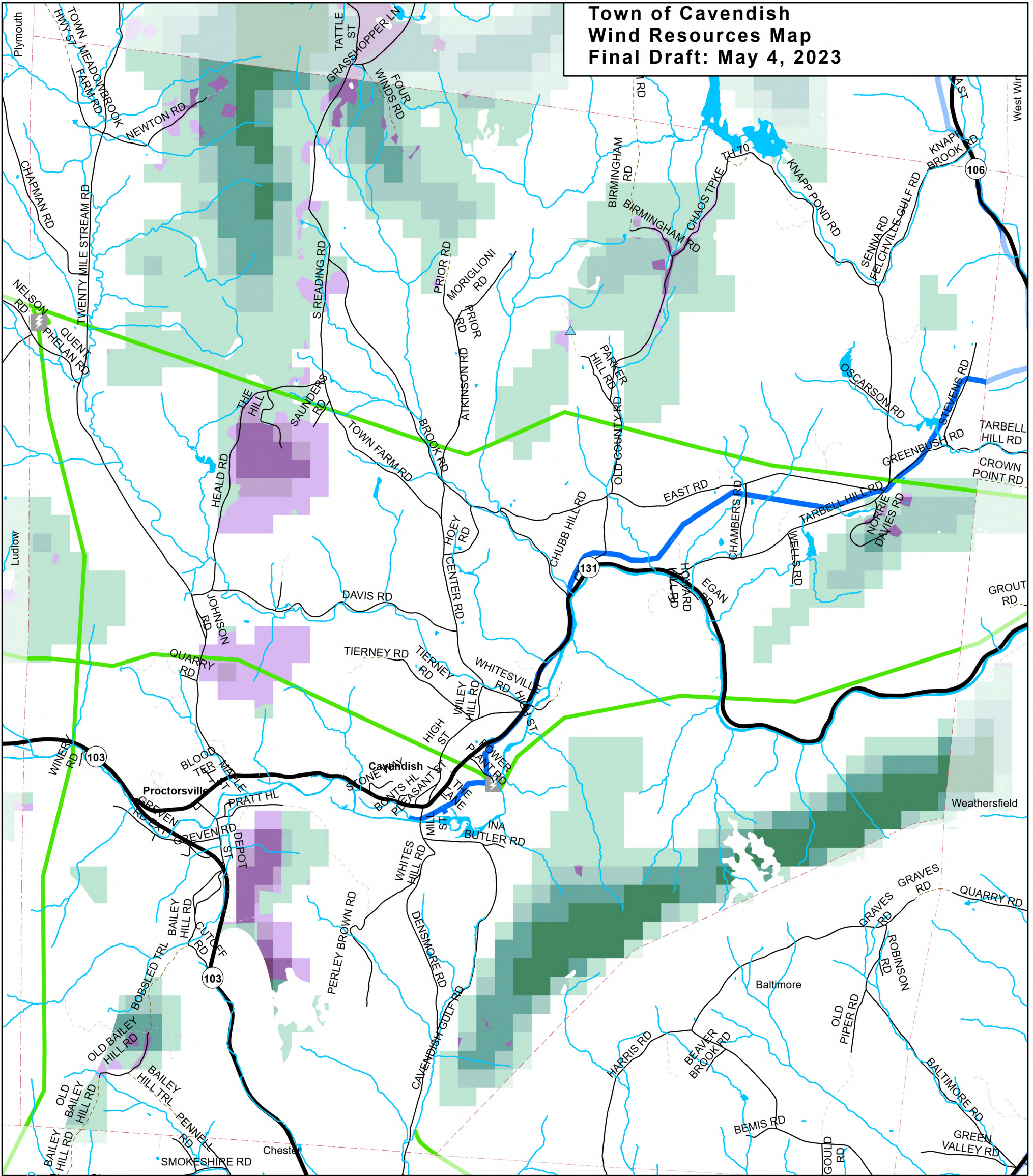


Town of Cavendish Wind Resources Map Final Draft: May 4, 2023



- River or Stream
- State Highway
- Class 1 Town Highway
- Class 2 and 3 Town Highway
- Class 4 Town Highway
- Forest Road, Legal Trail, or Private Road
- Water_VHDCARTO_poly
- Prime Wind Potential**
- 10.070000 - 10.94 mph
- 10.940001 - 12.10
- 12.100001 - 13.82
- 13.820001 - 16.46
- 16.460001 - 25.70
- Secondary Wind Potential**
- 10.070000 - 11.45 mph
- 11.450001 - 12.82
- 12.820001 - 14.32
- 14.320001 - 16.46
- 16.460001 - 25.70
- Residential Wind Facility
- Commercial Wind Facility
- Substation
- Electric Transmission Line
- Three Phase Electricity Distribution Lines
- Lake or Pond

This map shows the existing wind energy general sites and the potential for wind energy production considering

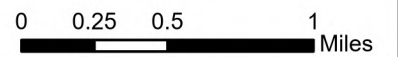
- Statewide analysis of wind potential
- Statewide, Regional and Local constraints which prevent or may impact development of wind energy generation facilities

Potential wind speeds were calculated using the TrueWind Solutions MesoMap wind mapping system. For more info see www.vtenergyatlas-info.com/wind/methodology

There are currently no commercial wind facilities in the area.

Known constraints include areas that should not be developed with renewable energy generation facilities. Possible constraints include areas that may impact the siting of renewable energy generation facilities, but do not necessarily prevent their development. In addition to constraints listed in the March 2017 Regional Energy Planning Standards, In addition to constraints listed in the March 2017 Regional Energy Planning Standards, the Town has identified scenic resources in the Town Plan and accompanying Town Constraints Map.

The Regional Energy Planning Standards are available at <http://publicservice.vermont.gov/content/act-174-recommendations-and-determination-standards>



Data sources: Wind Facilities (VT Energy Dashboard, Sites listed on Atlas on 02/03/2017), Prime and Secondary Wind Potential (VCGI 2017) (Regional Constraints and Town Constraints for TO BE DEFINED), Substations (BCRC 2015 and SWCRPC 2016), Three Phase Electricity Lines (BCRC 2015), Transmission Lines (RPC 2016), Waterbodies (VHD 2010), Roads (VTrans 2018), Town Boundary (VCGI 2012).

VT State Plane, Meters, NAD 83



**Mount Ascutney
Regional Commission**

P.O. Box 320, Ascutney, VT 05030
802-674-9201 www.marcvt.org

For planning purposes only
Not for regulatory interpretation
Drawn May 4, 2023