

**Town of Ludlow
Elevation and Slope Map
2023 Local Hazard Mitigation Plan
Adopted: DRAFT**

Legend

-  LUDLOW
-  Neighboring Towns
-  Interstate
-  US or State Highway
-  Class 1 Town Highway
-  Class 2 and 3 Town Highway
-  Class 4 Town Highway
-  Forest Road, Legal Trail, or Private Road
-  Railroads
-  Hill/ Mountain Summit
-  Lakes and Ponds
-  Rivers and Streams
-  100ft Contour Line
-  Steep slope of 24% or above

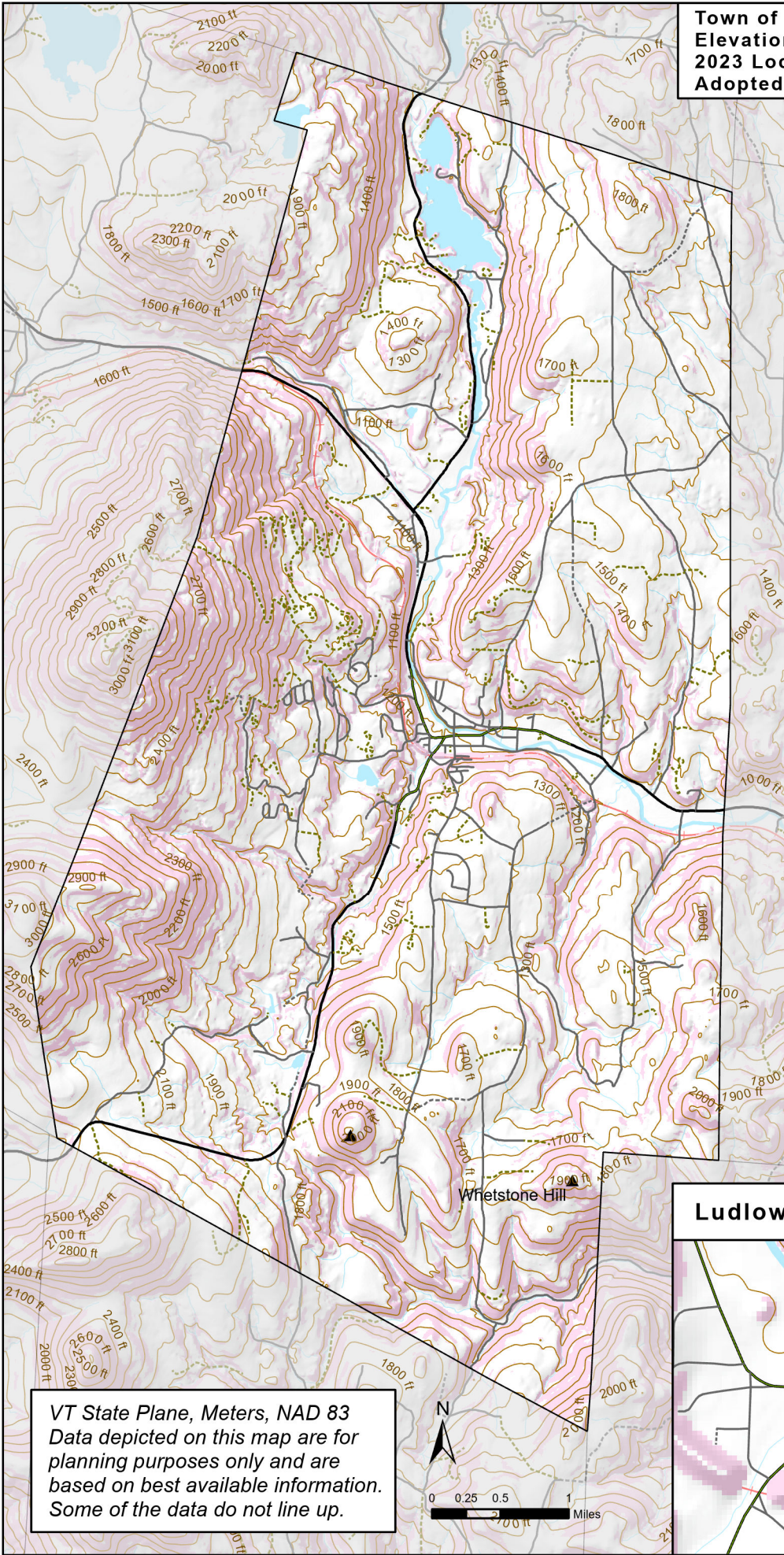
Data Sources:
Buildings (E911 2023), Cemeteries (VTrans 2001),
Transmission Lines (VCGI 2003 and RPC 2013),
Telecommunications Towers (Natural Resources Board
2007 and RPC 2013), Railroads (VTrans 2020),
Conserved Lands (VCGI 2019), Current Use Lands
(ANR 2016), Waterbodies (VHD 2019), Hill/Mountain
Summit (Unknown source), Road centerline (VTrans
2023), Village Center Designation Boundary (RPC
2019), Town Boundary (VCGI 2016), Aerial Imagery
(VCGI 2022), Parcels (VCGI 2023).



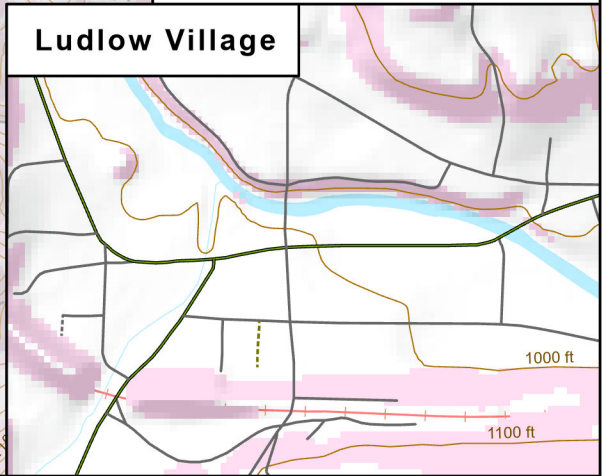
P.O. Box 320, Ascutney, VT 05030
802-674-9201 www.marcovt.org

For planning purposes only
Not for regulatory interpretation

DRAFT Drawn: Apr 24, 2024



Whetstone Hill



*VT State Plane, Meters, NAD 83
Data depicted on this map are for
planning purposes only and are
based on best available information.
Some of the data do not line up.*

