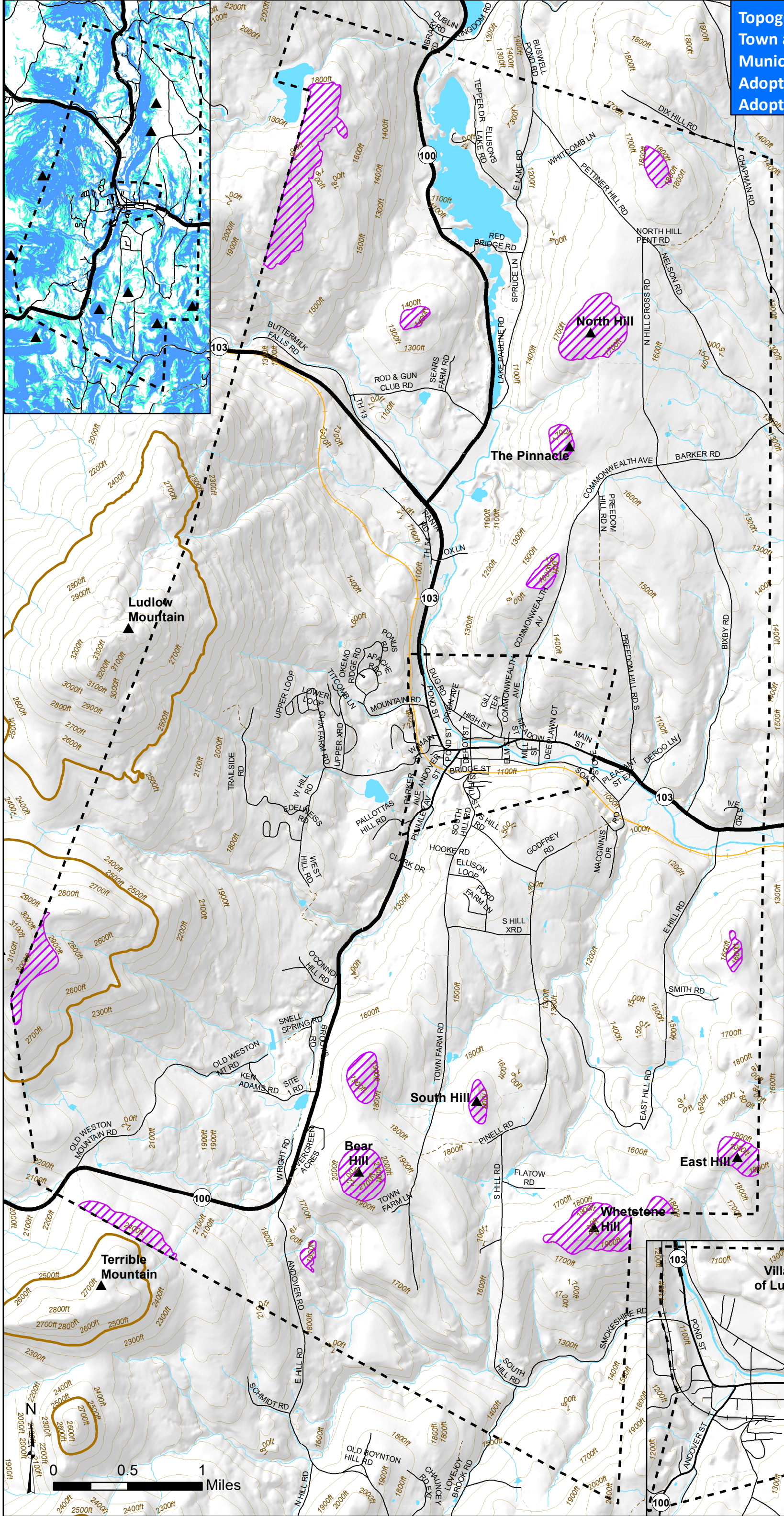


Topography Map
Town and Village of Ludlow
Municipal Development Plan
Adopted by Town: 10/7/2019
Adopted by Village: 10/8/2019



- ▲ Hill or Mountain Summit
- 100ft Contours
- 2500ft Contour
- Ridgeline Overlay District (Effective 2015)
- River/ Stream
- Lakes/ Ponds
- State Highway
- Class 1 Town Highway
- Class 2 and 3 Town Highway
- Class 4 Town Highway
- Forest Road, Legal Trail, or Private Road
- Railroad
- Town and Village Boundary
- Boundary

Steep slopes (small map only)

- Slopes of 16% - 23%
- 24% and over

Data Sources: Ridgeline Overlay District (RPC 2015, Effective 12/28/2015), Contours, steep slopes and hillshade (derived from 10m Digital Elevation Model, USGS/ VCGI 2012), Hill or Mountain Summit (Unknown source), Railroad (VTrans 2014), Waterbodies (VHD 2008), Roads (VTrans 2016), Town and Village Boundary (CA 2014).

VT State Plane. Meters, NAD 83
 Map drawn January 3, 2018

