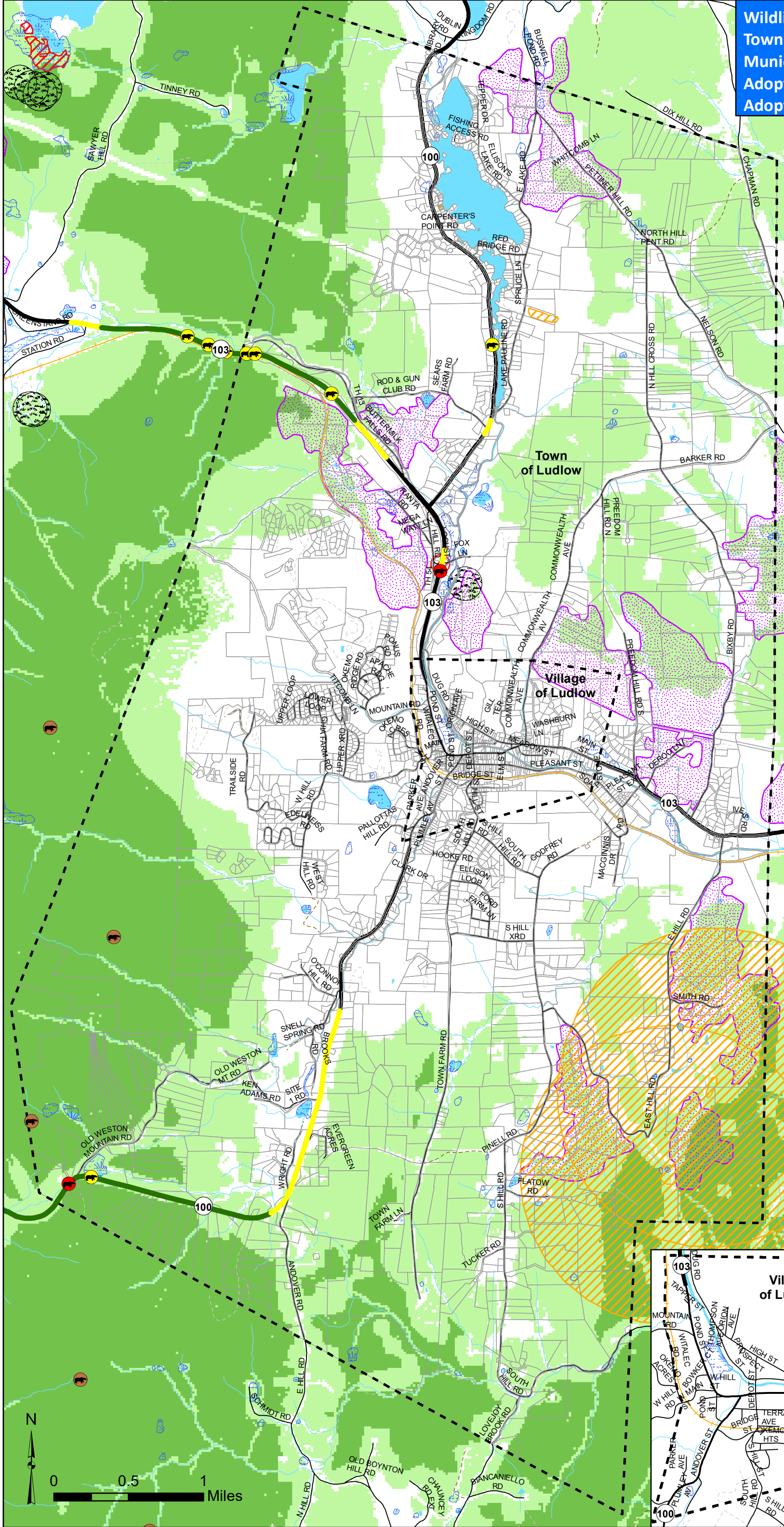


Wildlife Habitat Map
Town and Village of Ludlow
Municipal Development Plan
Adopted by Town: 10/7/2019
Adopted by Village: 10/8/2019



- Bear Collision
 - Bear Travel
 - Bear Mast
 - Wetland
 - Vernal Pool
 - State Threatened Species
 - State Endangered Species
 - Deer Wintering Area
- Wildlife Habitat Suitability**
(out of 10)
- 0 - 6
 - 6.01 - 8
 - 8.01 - 10
- Wildlife Crossing Value**
(out of 10)
- 5 - 6.5
 - 7 - 8.5
- State Highway
 - Class 1 Town Highway
 - Class 2 and 3 Town Highway
 - Class 4 Town Highway
 - Forest Road, Legal Trail, or Private Road
 - Railroad
 - Parcels (large map only)
 - Town and Village Boundary
 - Boundary

Note: Some data, eg wetlands and vernal pools, is incomplete. Further study may be needed prior to applying for permits to develop or make changes to the land.

Data Sources: Bear Collision (ANR 2004), Bear Travel/ Crossing Area (ANR 2004), Bear Mast (ANR 2001), Threatened and Endangered Species (ANR 2017), Vernal Pools (SN6 component of Biofinder 2013), Wetlands (VSWI, ANR 2010), Deer Wintering Areas (ANR 2011), Wildlife Habitat Suitability (ANR 2006), Waterbodies (VHD 2008), Railroad (VTrans 2014), Waterbodies (VHD 2008), Roads (VTrans 2016), Town and Village Boundary (CA 2014).

VT State Plane. Meters, NAD 83
 Map drawn January 3, 2018

