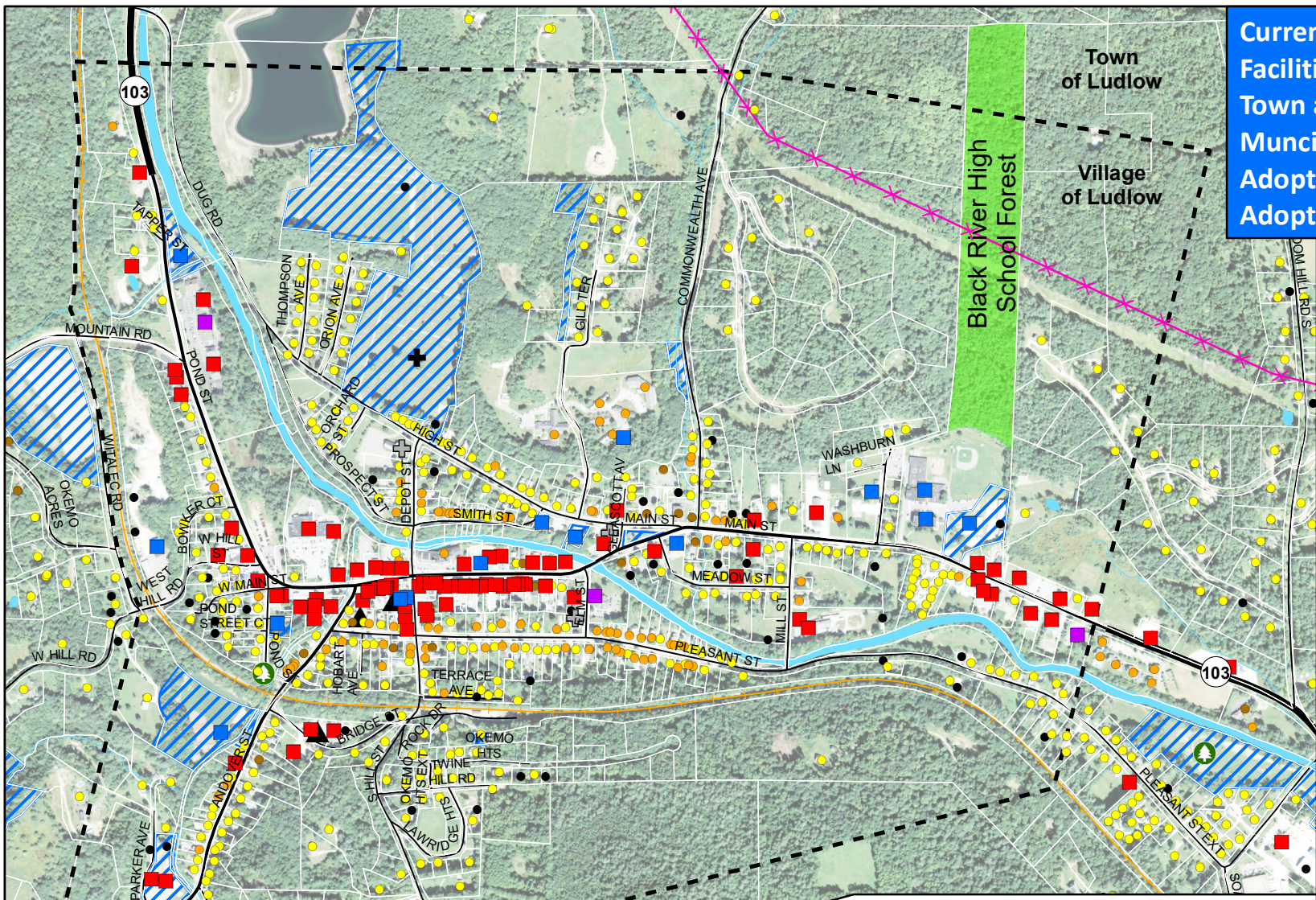


**Current Land Use and Facilities Map (Village)**  
**Town and Village of Ludlow**  
**Municipal Development Plan**  
**Adopted by Town: 10/7/2019**  
**Adopted by Village: 10/8/2019**

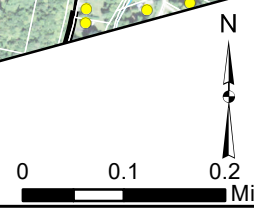


- State Forest
- Town Park/ Forest/ Recreation Area
- Lake or River Access
- Fishing Access
- Other notable recreation site
- Town Owned Land
- Protected Lands
- Transmission Line
- River/ Stream
- Lakes/ Ponds
- State Highway
- Class 1 Town Highway
- Class 2 and 3 Town Highway
- Class 4 Town Highway
- Forest Road, Legal Trail, or Private Road
- Railroad
- Parcels
- Town and Village Boundary

- Telecommunications Facility
- Civic/ Public
- Commercial
- Industrial
- Health Center
- Cemetery
- House of Worship
- Lodging, seasonal housing, or commercial with residential
- Multi-family residential
- Single Family Residential or Mobile Home
- Other
- Waterfall, Cascade or Gorge

Note: Use of public lands may be restricted.

Data Sources: Telecommunications Tower (Natural Resources Board 2007 and SWCRPC 2013), Electric Transmission Line Corridor (VCGI 2003 and SWCRPC 2015), Waterfalls Cascades and Gorges (ANR 1998), Recreational Sites (RPC 2014), Protected Lands (Public Land and Privately Conserved Land) (VCGI and others 2016), Town Owned Land (RPC 2011), Site types (E911 2015 and RPC 2016), Cemeteries (E911 2015 and RPC 2016), Railroad (VTrans 2014), Waterbodies (VHD 2008), Roads (VTrans 2016), Parcels (CAI 2016), Town and Village Boundary (CA 2014).



VT State Plane. Meters, NAD 83  
 Map drawn January 3, 2018

